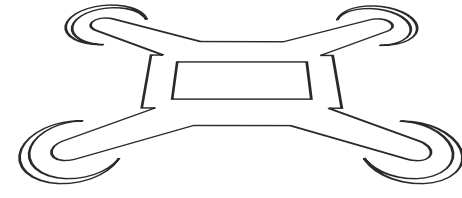


# SKYVIEW



**DRONE INSPIRED  
STATE OF THE ART BUILDING**



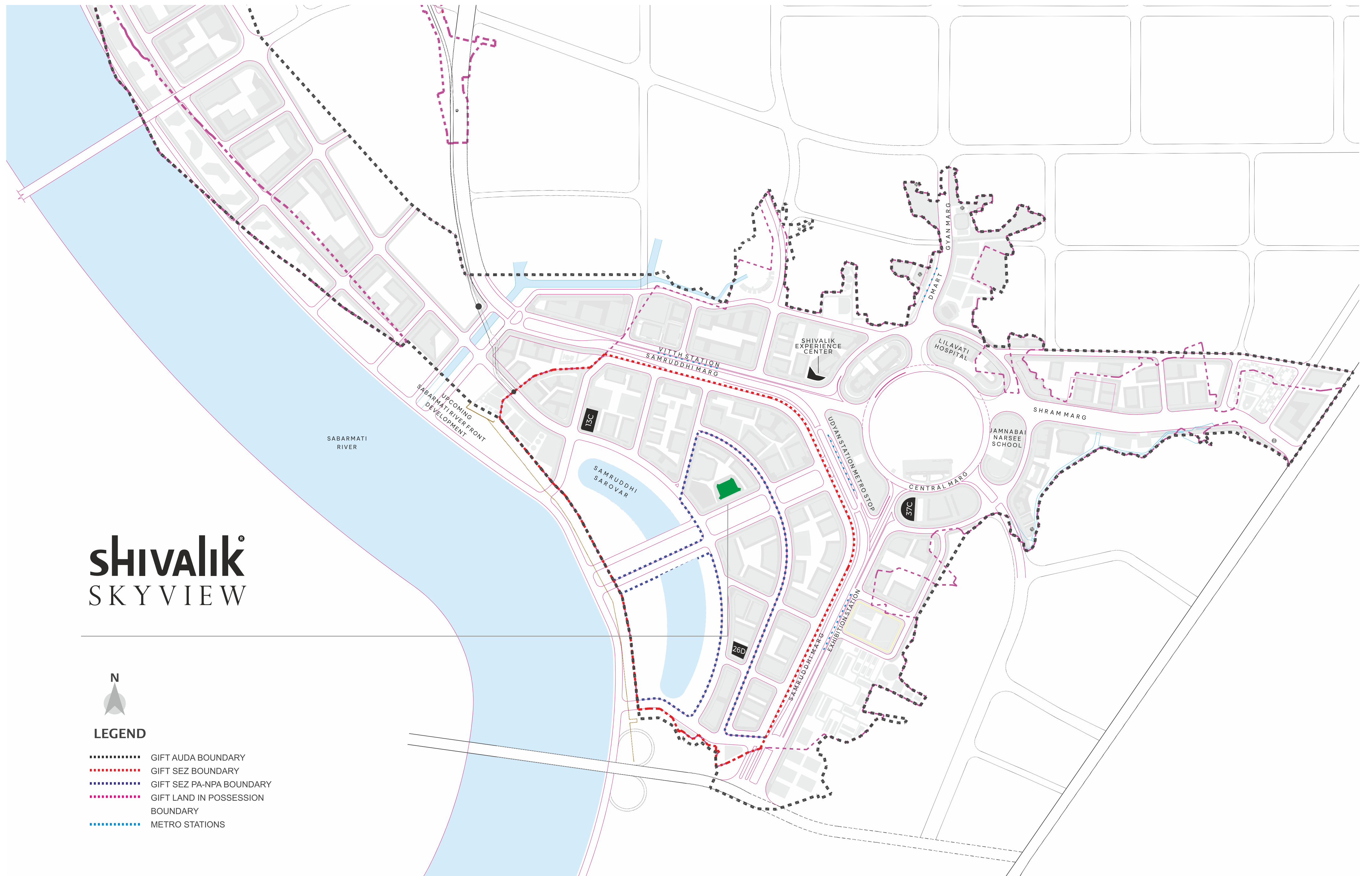
**2 - 3 BHK APARTMENTS & PENTHOUSES  
AT GIFT CITY**

# shivalik® SKYVIEW



## LEGEND

- ..... GIFT AUDA BOUNDARY
- ..... GIFT SEZ BOUNDARY
- ..... GIFT SEZ PA-NPA BOUNDARY
- ..... GIFT LAND IN POSSESSION BOUNDARY
- ..... METRO STATIONS



## A VIEW FROM THE SKY, THROUGH THE SKY

OUR DAZZLING RESIDENTIAL PROJECT OFFERS A BEAUTIFUL SKY-LIVING SENSATION. FROM THE VANTAGE POINT OF THE SKY, YOU'LL BE TREATED TO BREATHTAKING VIEWS. THE PROJECT IS DESIGNED WITH DELICATE FEATURES AND AMENITIES THAT WILL COMFORT YOUR SOUL, MAKING IT THE PERFECT PLACE TO CALL HOME. GREAT VENTILATED HOMES CREATE A MORE COMFORTABLE LIVING EXPERIENCE BY PROVIDING FRESH AIR AND REDUCING INDOOR POLLUTANTS AND MOISTURE LEVELS. WHETHER YOU'RE LOOKING FOR A PLACE TO RELAX AND UNWIND OR WANT TO EXPERIENCE THE EXCITEMENT OF GIFT CITY LIVING, **SHIVALIK SKYVIEW** IS THE PERFECT CHOICE TO GIVE A NEW TOUCH TO YOUR LIFE.



**THE SKY  
IS THE CEILING  
HERE**

THE SKY LIVING IS UNLIKE ANYTHING YOU'VE EXPERIENCED BEFORE. WITH THE SKY AS YOUR CEILING, YOU'LL ENJOY BREATHTAKING VIEWS THAT EXTEND OUT IN FRONT OF YOU. IMMERSE YOURSELF IN THE NATURAL BEAUTY THAT SURROUNDS YOU AND ENJOY A TRULY UNIQUE AND UNPARALLELED LIVING EXPERIENCE AT **SHIVALIK SKYVIEW.**

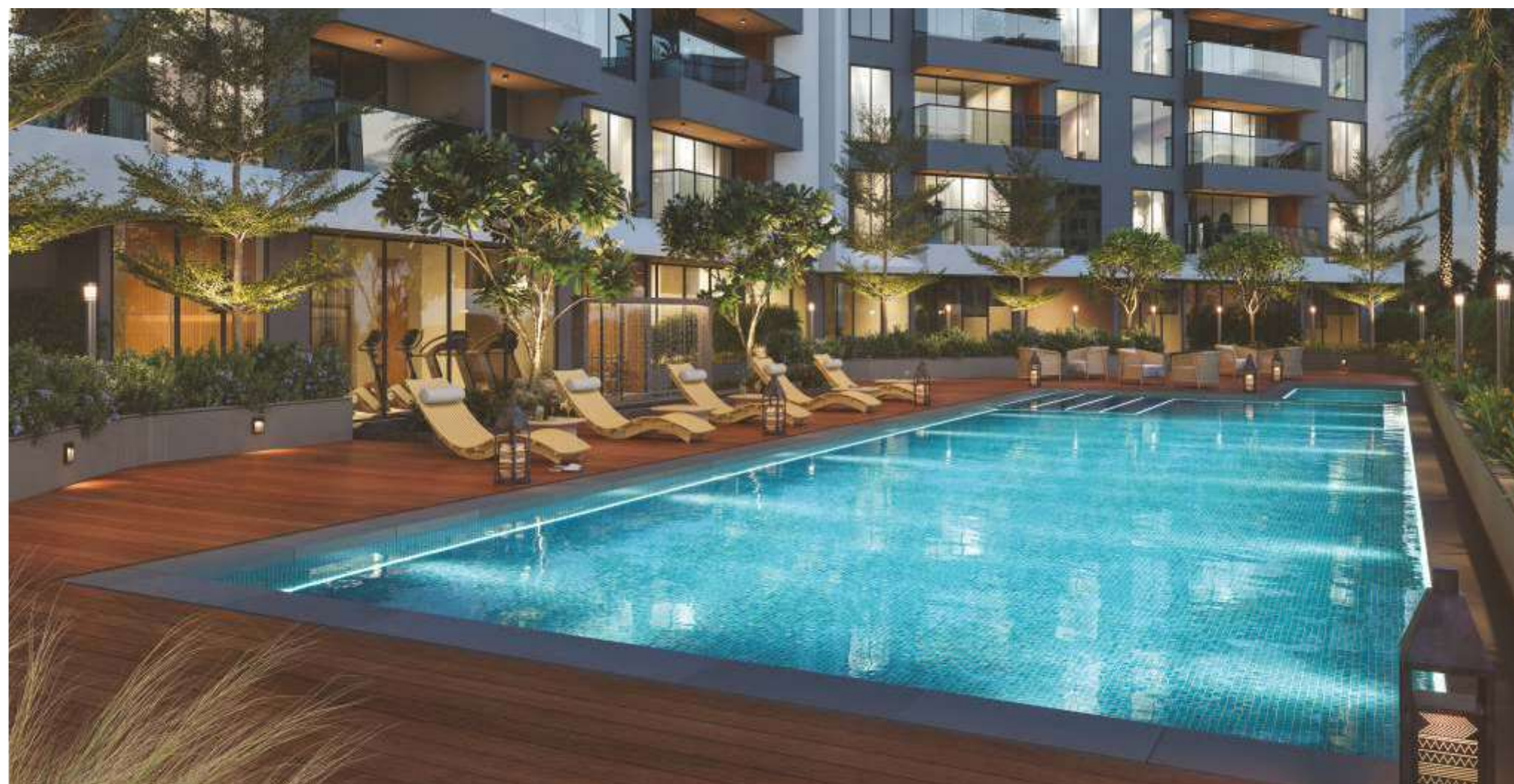


AT **SHIVALIK SKYVIEW**, THE JOY AND WONDER NEVER STOP. WITH A DEDICATED KID'S PLAY AREA AND FACILITIES, CHILDREN CAN EXPLORE AND PLAY TO THEIR HEART'S CONTENT IN A SAFE AND NURTURING ENVIRONMENT. IT'S THE PERFECT PLACE TO CREATE LASTING MEMORIES AND INSPIRE YOUNG IMAGINATIONS.

## A JOY & WONDER

- JOGGING TRACK
- GARDEN WITH MEDITATION DECK
- LOBBY & RECEPTION
- GARDEN WITH SEATING
- PARTY LAWN
- GYMNASIUM
- MINI THEATRE
- MULTI-PURPOSE SPORTS COURT
- SENIOR CITIZEN ROOM
- HOUSE KEEPING
- ADMIN OFFICE

## ROLL IN THE BLUES AROUND THE GREENS



- *INDOOR GAMES*
- *TODDLERS ZONE*
- *CAFETERIA*
- *LIBRARY/ READING ROOM*
- *CHILDREN PLAY AREA*
- *SPA MASSAGE WITH STEAM*
- *SAUNA, SALON & LAUNDRY*
- *MEDICARE ROOM*
- *MULTI-PURPOSE HALL*

**THE SKY SEES  
INFINITE FUN AND  
ENDLESS SMILES**



THE OUTDOOR SPACE IS DESIGNED TO STIMULATE YOUNG MINDS AND ENCOURAGE CREATIVITY WHILE KEEPING THEM SAFE AND SECURE. THE SKY SEES ENDLESS FUN AND ENDLESS SMILES IN THE DEDICATED PLAY AREA FOR KIDS. PARENTS CAN WATCH FROM ABOVE AS THEIR CHILDREN LAUGH AND PLAY, CREATING MEMORIES THAT WILL LAST A LIFETIME. WITH THE SKY AS THEIR WITNESS, THERE'S NO LIMIT TO THE FUN AND JOY THEY'LL EXPERIENCE AT **SHIVALIK SKYVIEW**.



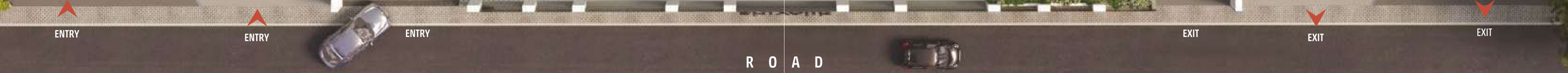
## FIND THE GRACE OF MOMENTS IN THE SKY

WITH LUXURIOUS AND COMFORTABLE LIVING SPACES THAT OFFER STUNNING VIEWS OF THE SKY, YOU'LL EXPERIENCE A SENSE OF SERENITY AND CALMNESS THAT CAN'T BE FOUND ANYWHERE ELSE. FIND THE GRACE OF MOMENTS IN THE SKY RIGHT FROM YOUR BEDROOM. FROM SUNRISES TO SUNSETS, EVERY MOMENT IN THE SKY IS AN OPPORTUNITY TO FIND GRACE AND BEAUTY IN THE WORLD AROUND YOU. WITH **SHIVALIK SKYVIEW**, LUXURY LIVING IN THE SKY HAS NEVER BEEN MORE ACCESSIBLE.





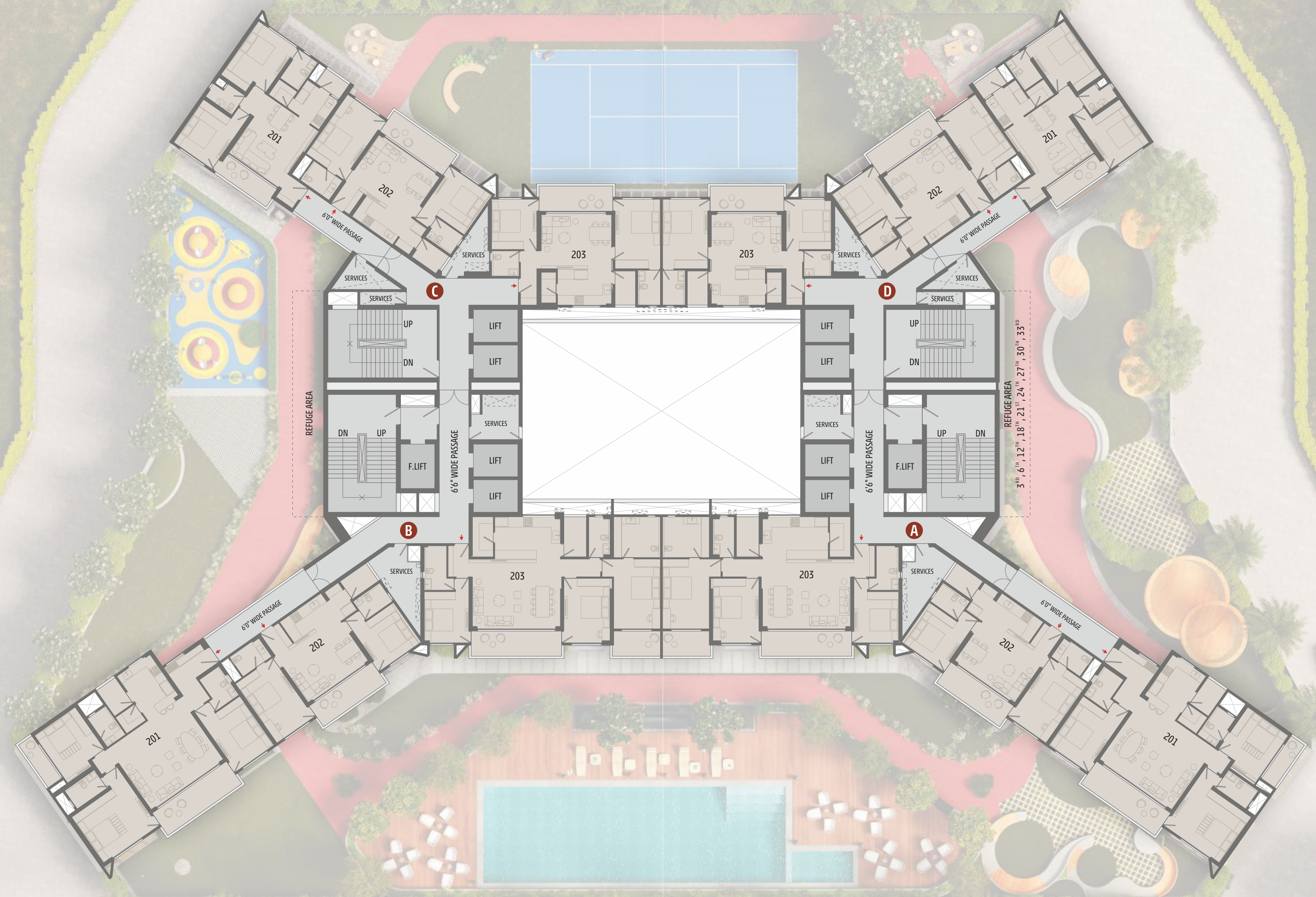
GROUND LEVEL

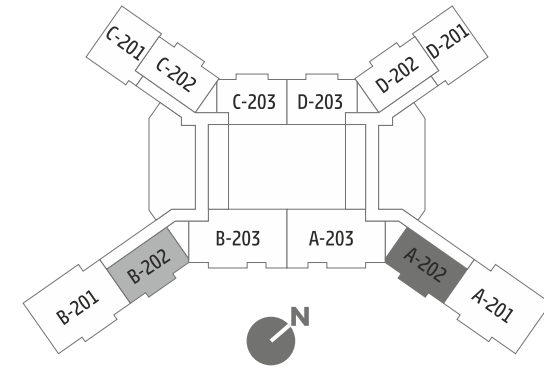


**PODIUM LEVEL**  
*(FIRST FLOOR)*



**TYPICAL LEVEL**  
(2<sup>ND</sup> TO 21<sup>ST</sup> FLOOR &  
23<sup>RD</sup> TO 32<sup>ND</sup> FLOOR)  
22<sup>ND</sup> SKIP FLOOR



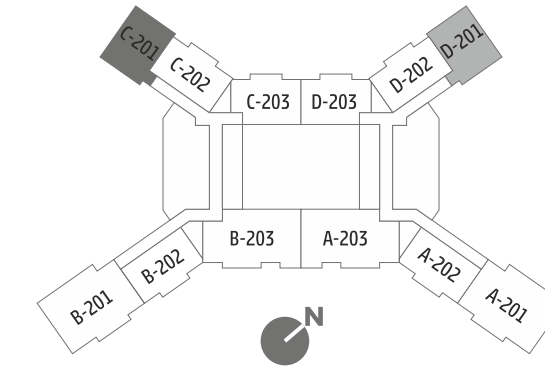
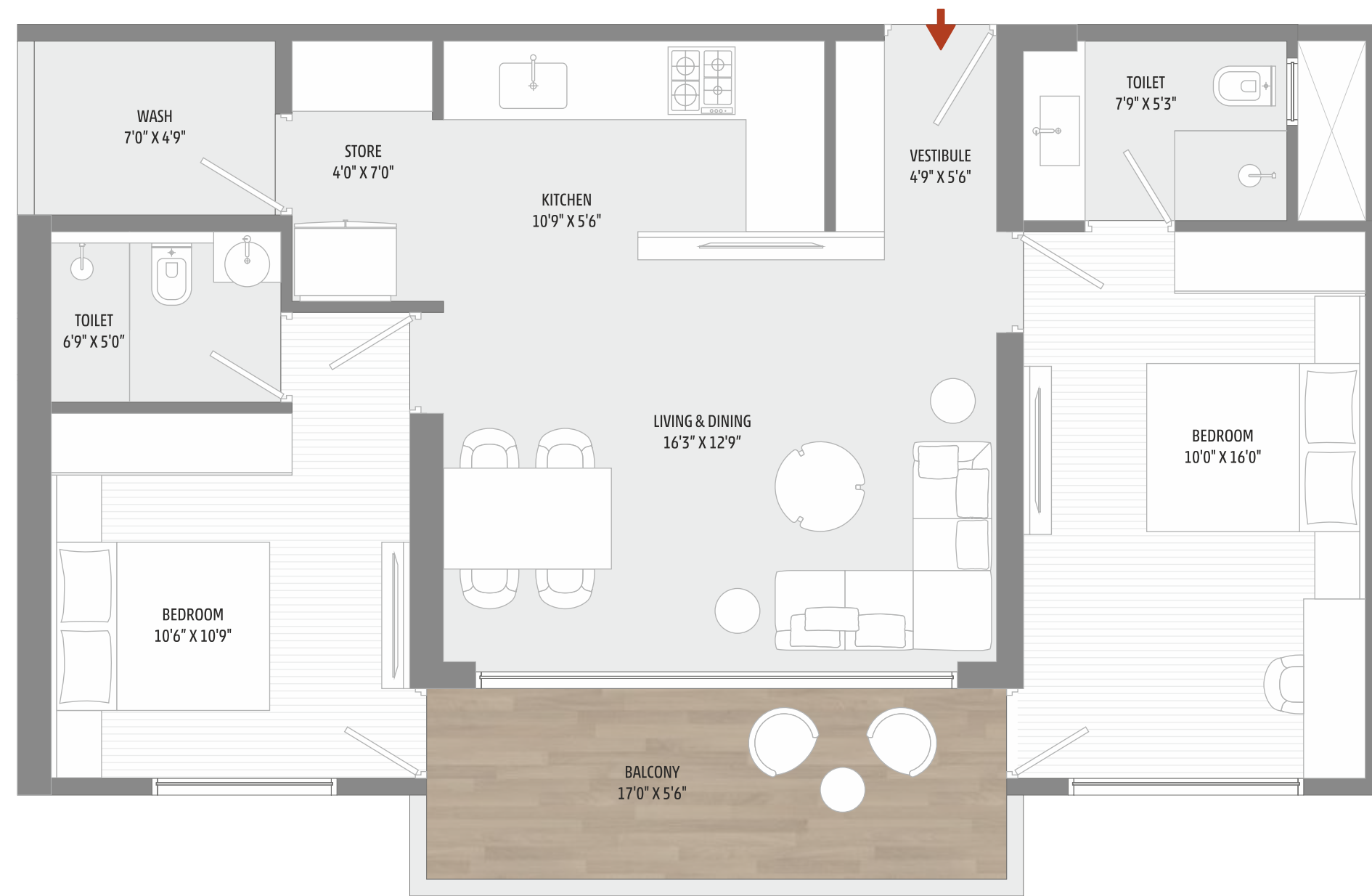


**2BHK - TYPE 01**

INDICATIVE SBA - 1582 SQ.FT.

RERA CARPET + BALCONY + WASH = 870.01 SQ.FT.

*BALCONY ACCESS  
FROM ALL THE ROOMS.*

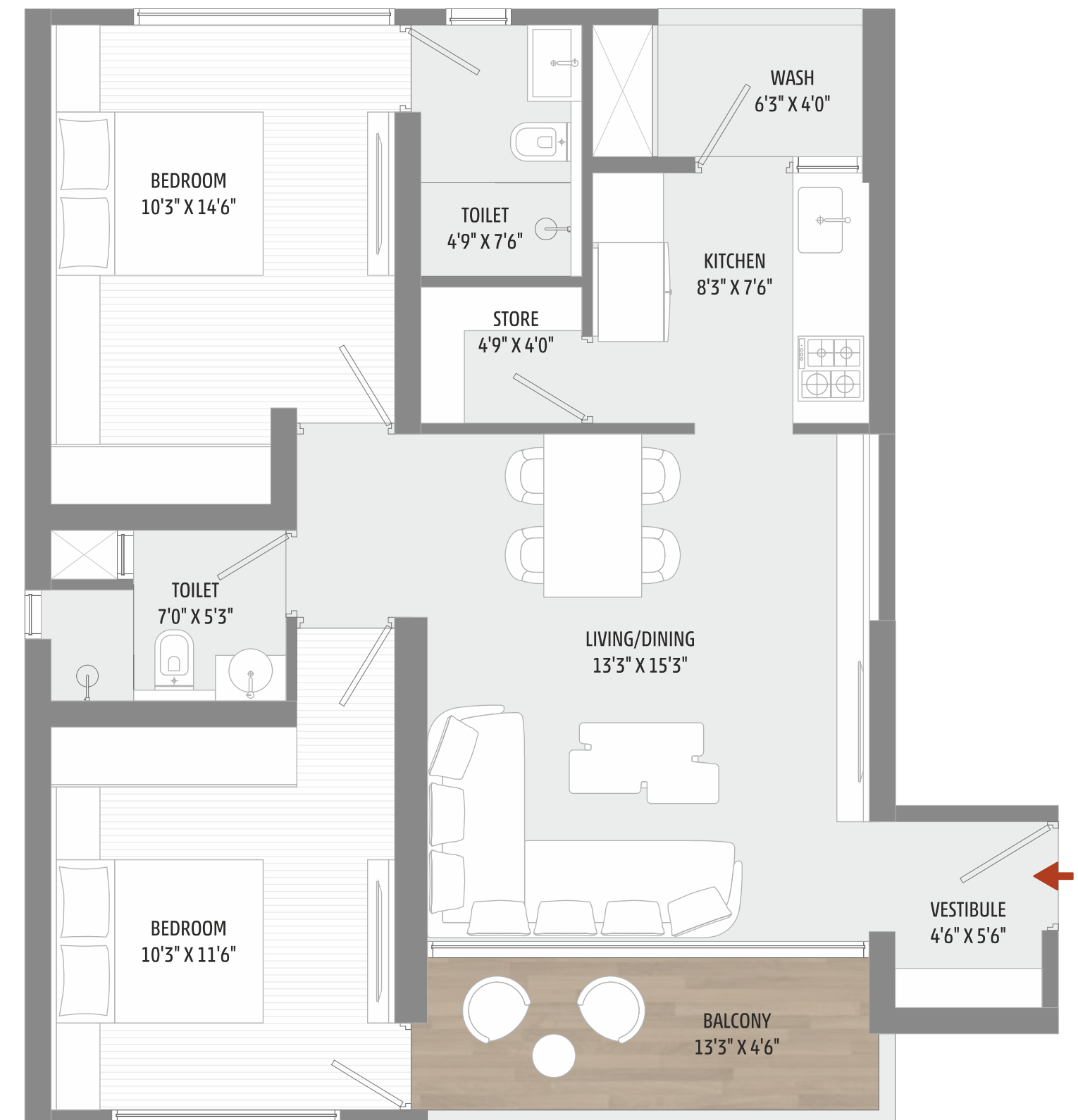


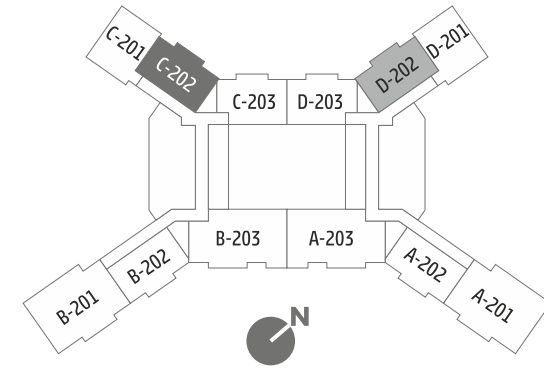
**2BHK - TYPE 02**

INDICATIVE SBA - 1506 SQ.FT.

RERA CARPET + BALCONY + WASH = 828.10 SQ.FT.

*BALCONY ACCESS  
FROM ONE BEDROOM.*



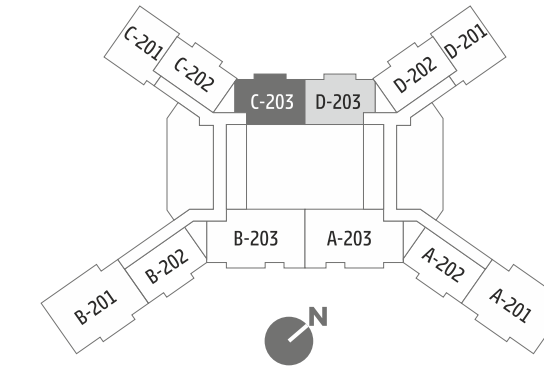
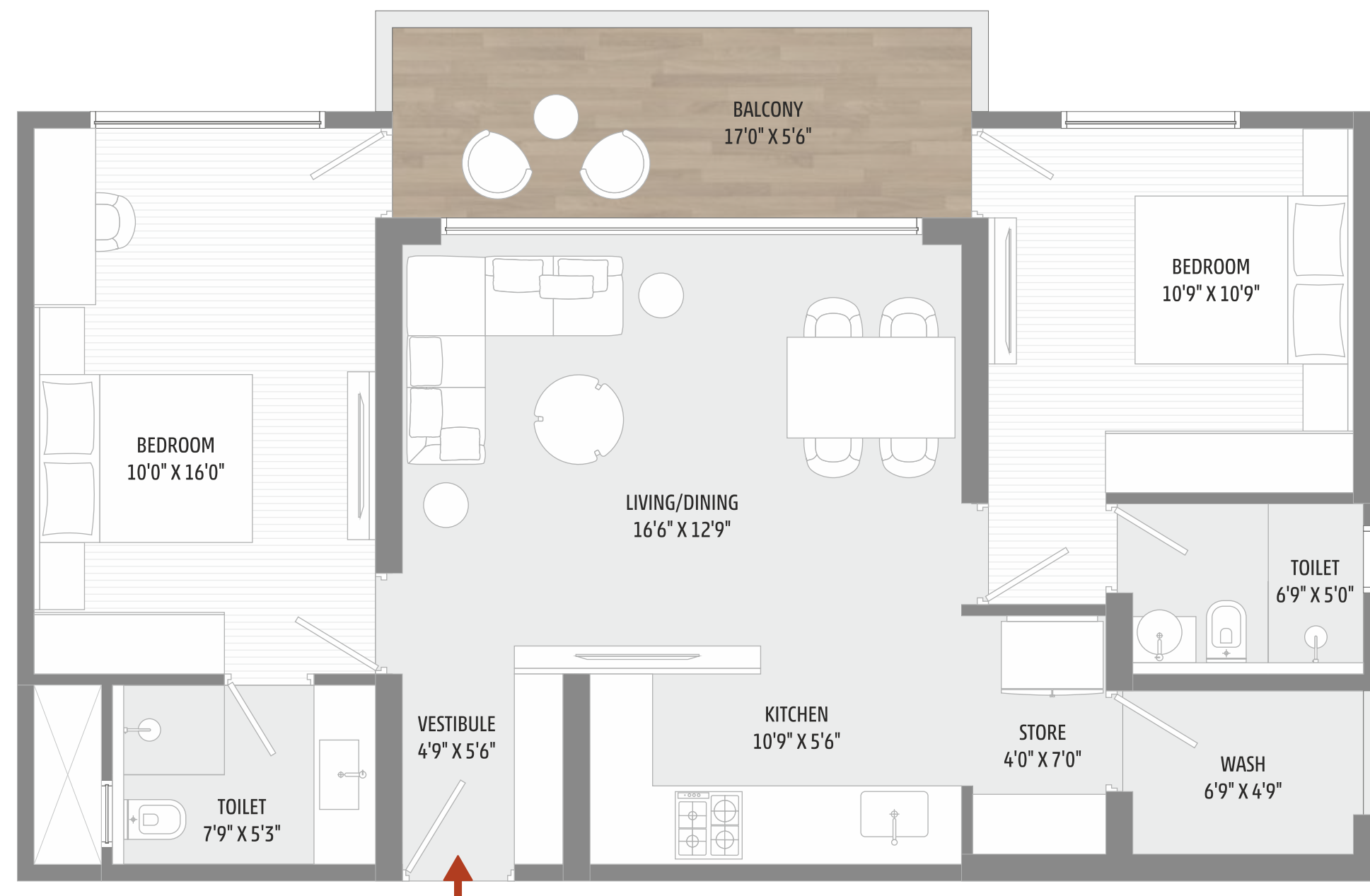


**2 BHK - TYPE 03**

INDICATIVE SBA - 1591 SQ.FT.

RERA CARPET + BALCONY + WASH = 874.96 SQ.FT.

*BALCONY ACCESS  
FROM ALL THE ROOMS.*



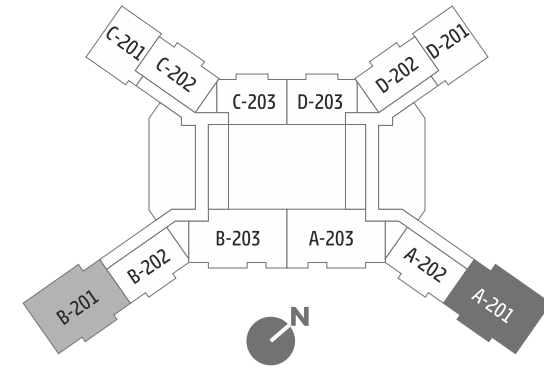
**2 BHK - TYPE 04**

INDICATIVE SBA - 1600 SQ.FT.

RERA CARPET + BALCONY + WASH = 880.25 SQ.FT.

*BALCONY ACCESS  
FROM ALL THE ROOMS.*



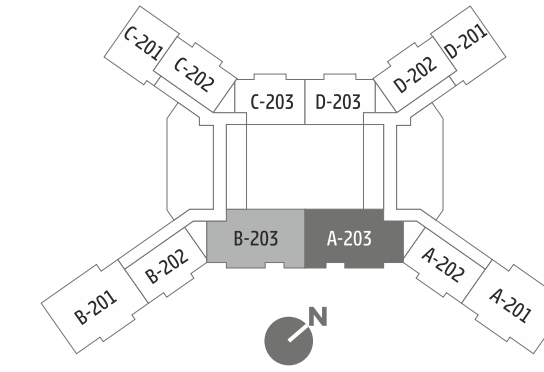
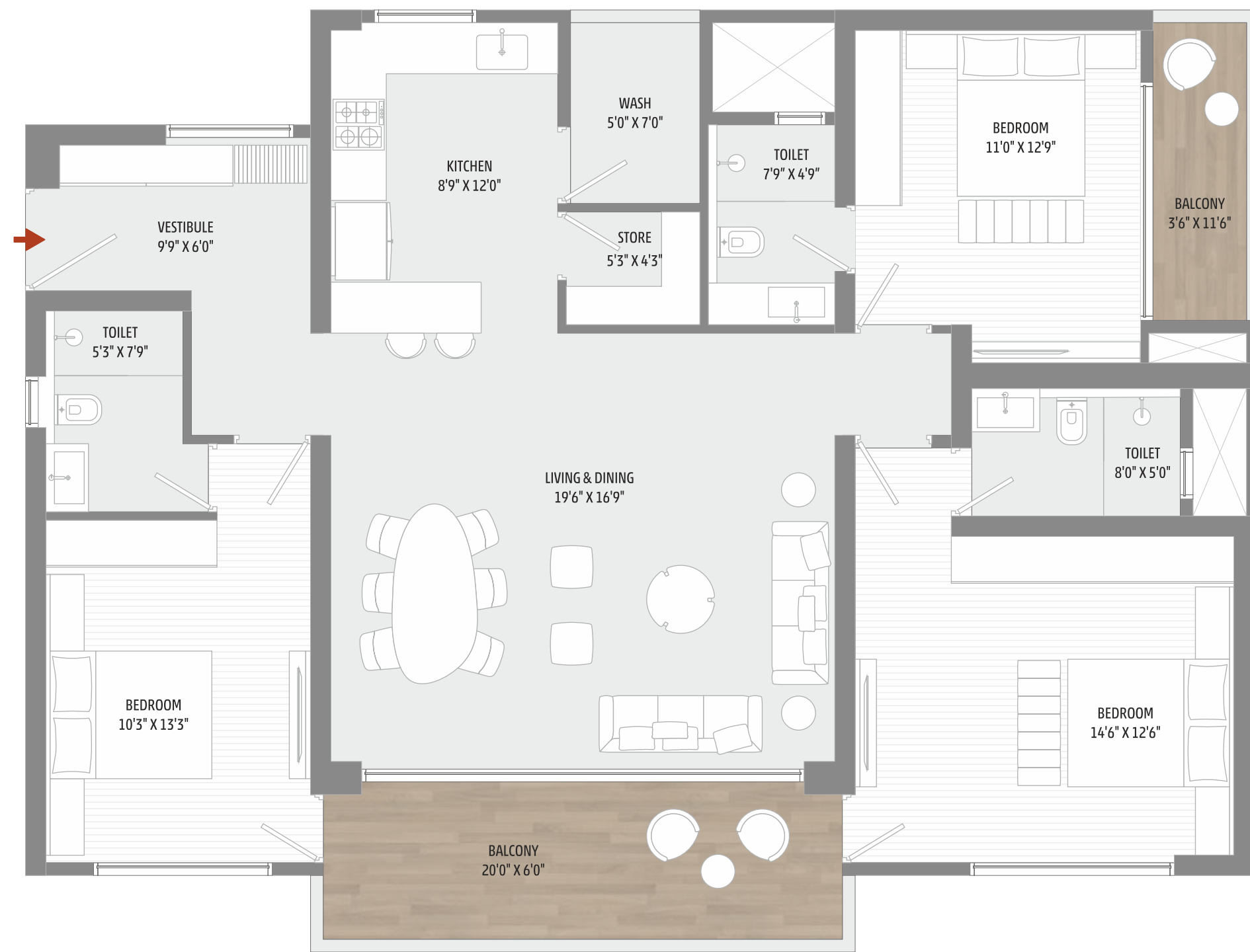


**3BHK - TYPE 01**

INDICATIVE SBA - 2671 SQ.FT.

RERA CARPET + BALCONY + WASH = 1469.25 SQ.FT.

*BALCONY ACCESS  
FROM ALL THE ROOMS.*



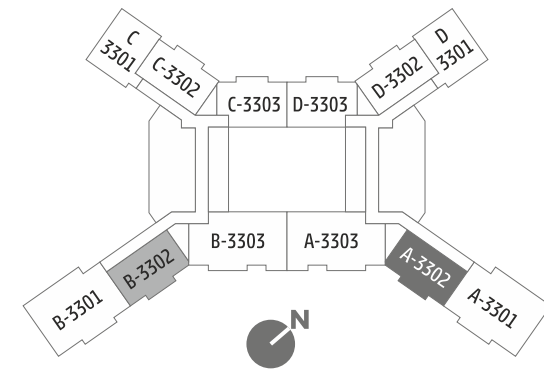
**3BHK - TYPE 02**

INDICATIVE SBA - 2686 SQ.FT.

RERA CARPET + BALCONY + WASH = 1477.06 SQ.FT.

*BALCONY ACCESS  
FROM ALL THE ROOMS.*





**3 B H K - LOWER PENTHOUSE 33<sup>RD</sup> FLOOR**

INDICATIVE SBA - 4329 SQ.FT.

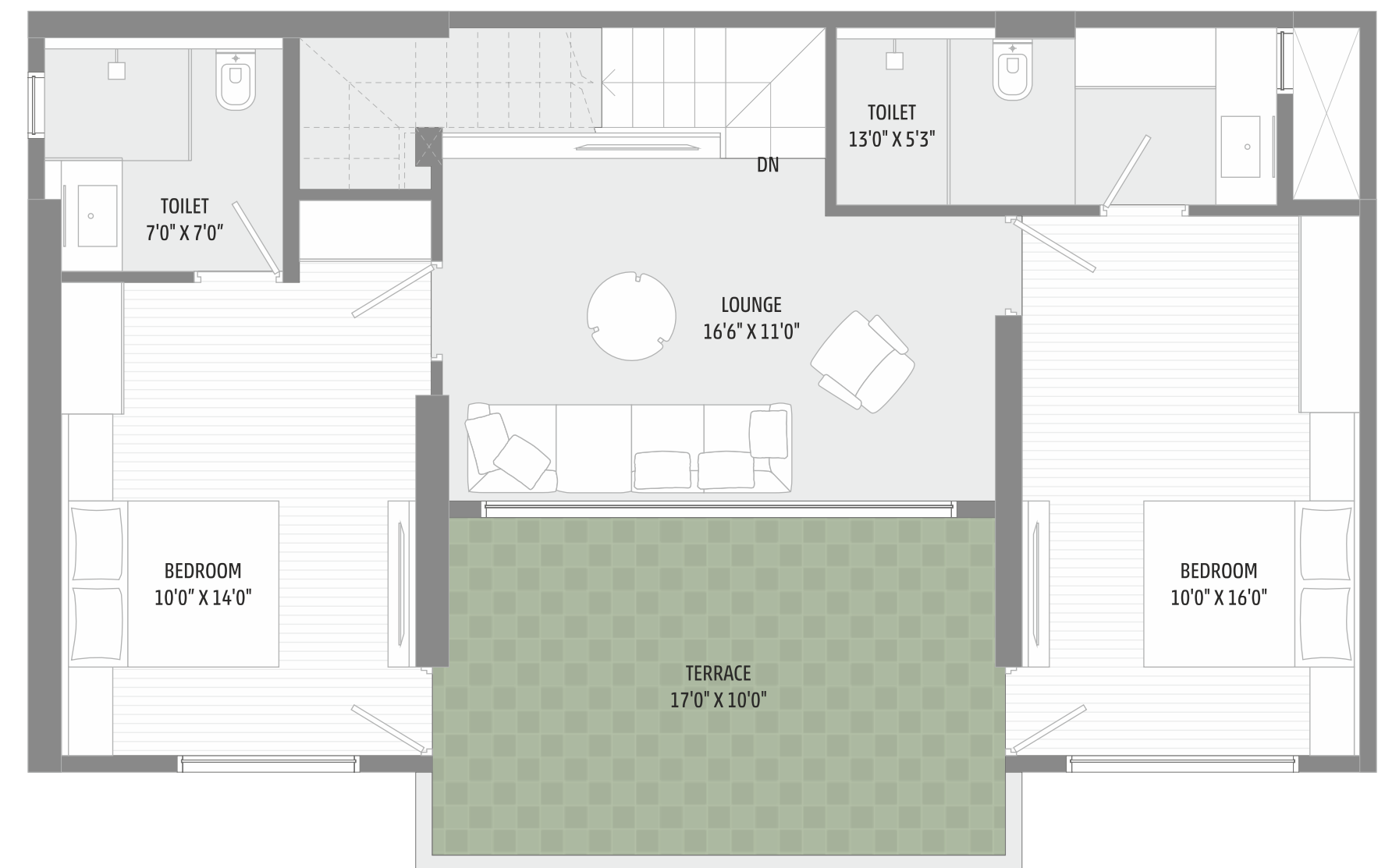
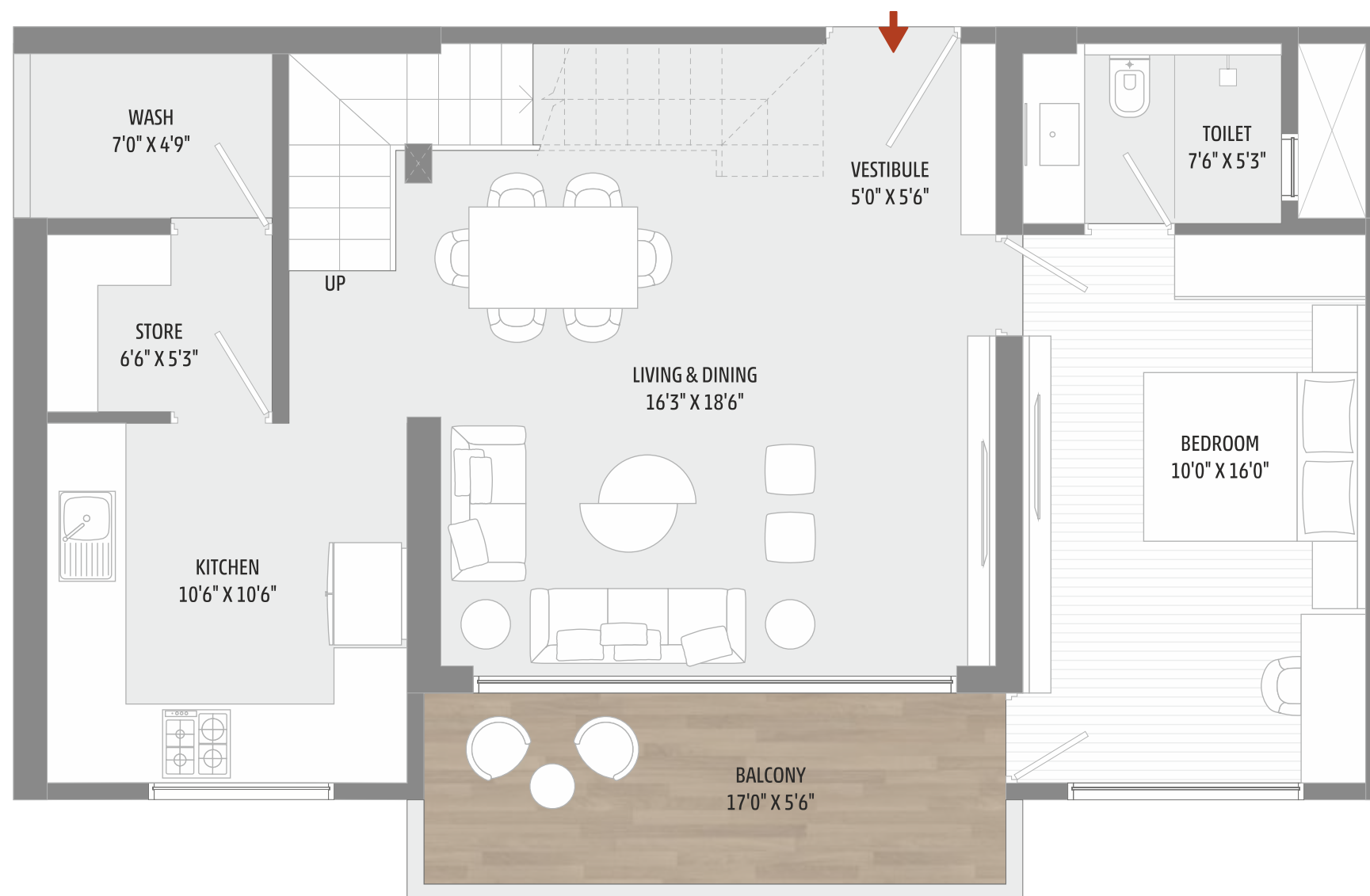
RERA CARPET + BALCONY + WASH =1572.26 SQ.FT.

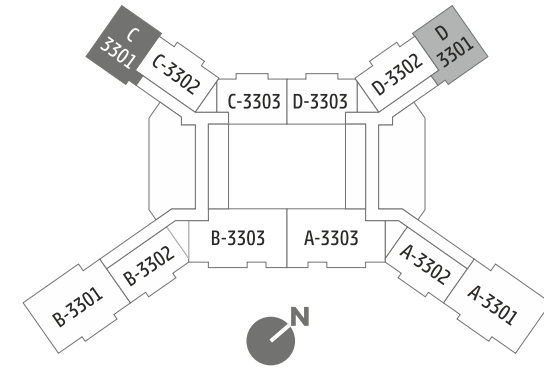
*BALCONY ACCESS  
FROM ALL THE ROOMS*

**UPPER PENTHOUSE 34<sup>TH</sup> FLOOR**

TERRACE AREA - 170 SQ.FT.

*BALCONY ACCESS  
FROM ALL THE ROOMS.*



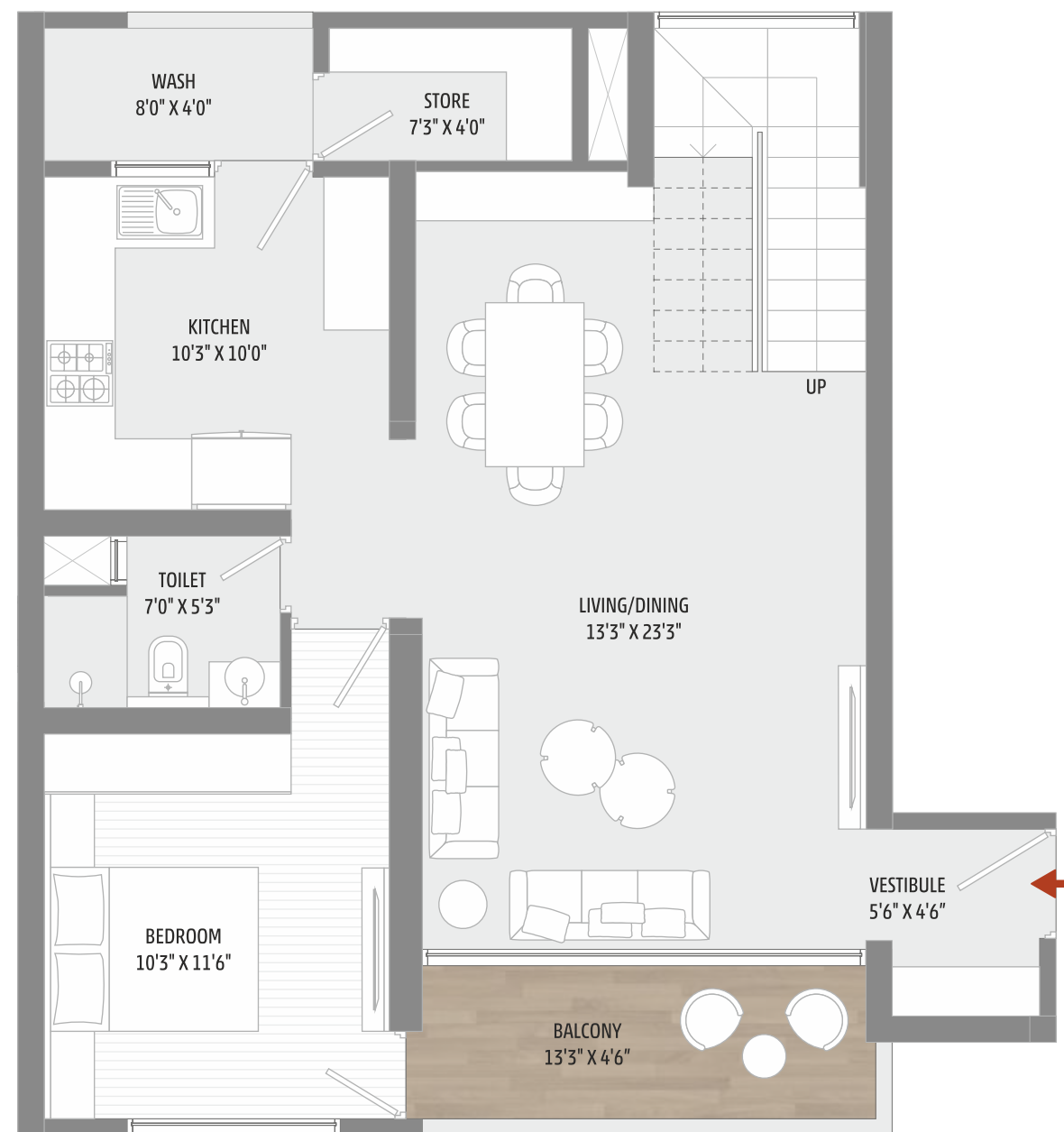


**3 B H K - LOWER PENTHOUSE 33<sup>RD</sup> FLOOR**

INDICATIVE SBA - 2771 SQ.FT.

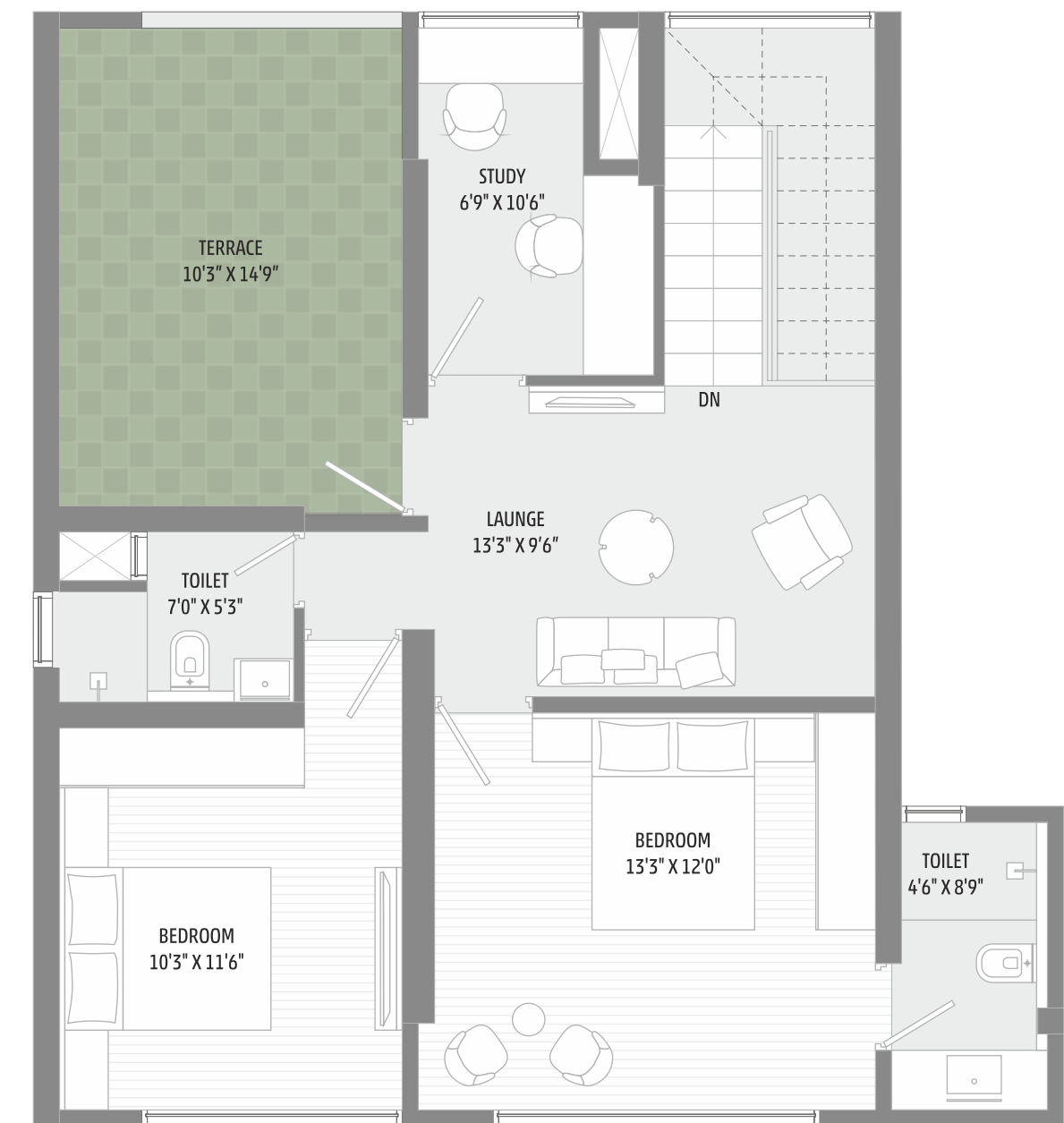
RERA CARPET + BALCONY + WASH = 1524.21 SQFT

*BALCONY ACCESS  
FROM ONE BEDROOM.*

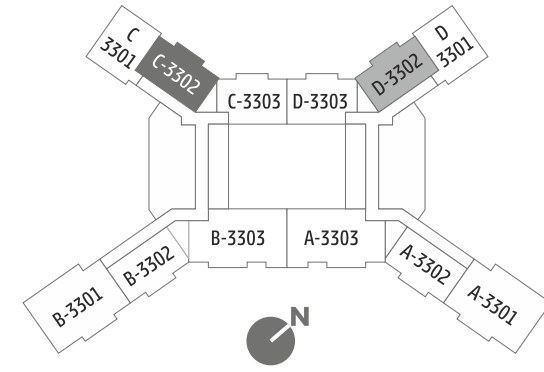


**UPPER PENTHOUSE 34<sup>TH</sup> FLOOR**

TERRACE AREA - 151 SQ.FT.







**3 B H K - LOWER PENTHOUSE 33<sup>RD</sup> FLOOR**

INDICATIVE SBA - 2877 SQ.FT.

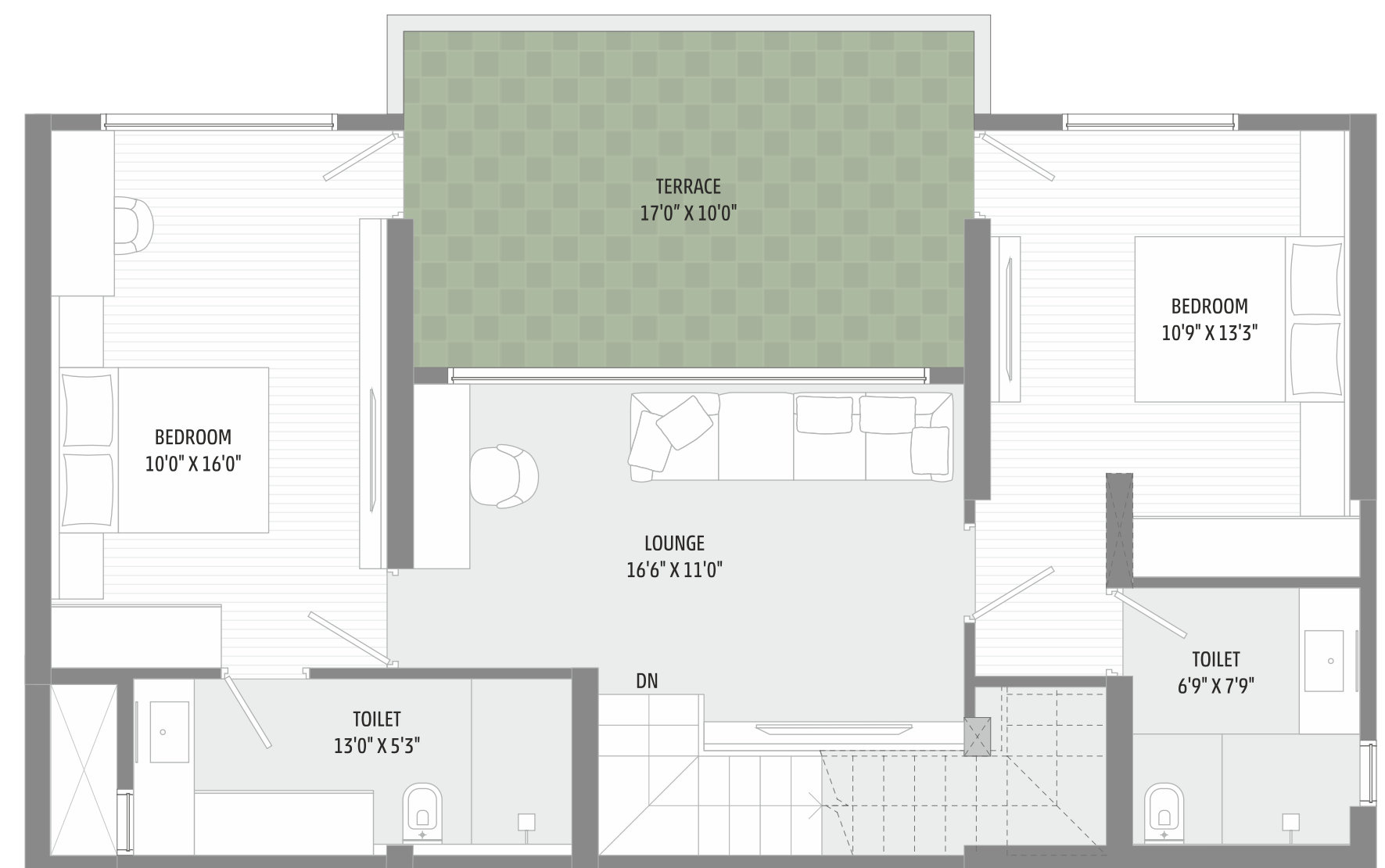
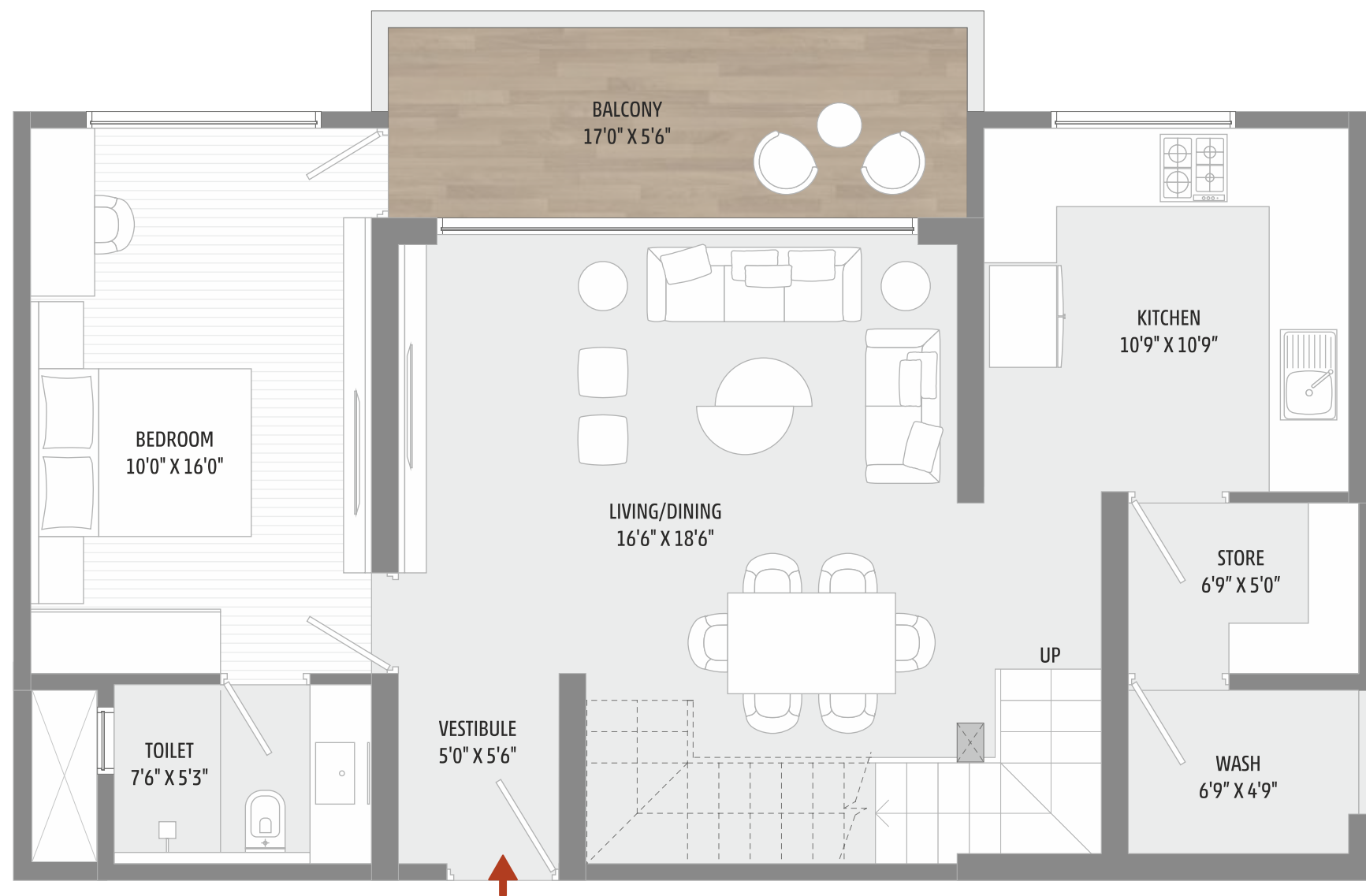
RERA CARPET + BALCONY + WASH = 1582.60 SQFT

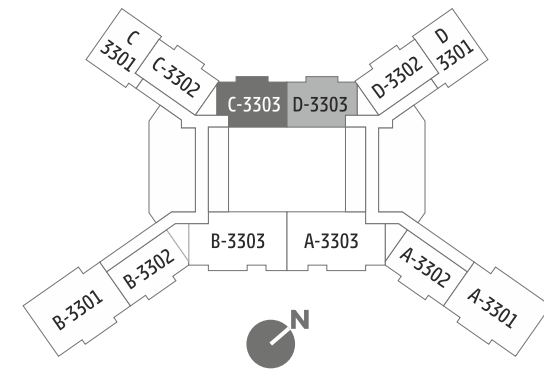
*BALCONY ACCESS  
FROM ALL THE ROOMS.*

**UPPER PENTHOUSE 34<sup>TH</sup> FLOOR**

TERRACE AREA - 170 SQ.FT.

*BALCONY ACCESS  
FROM ALL THE ROOMS.*



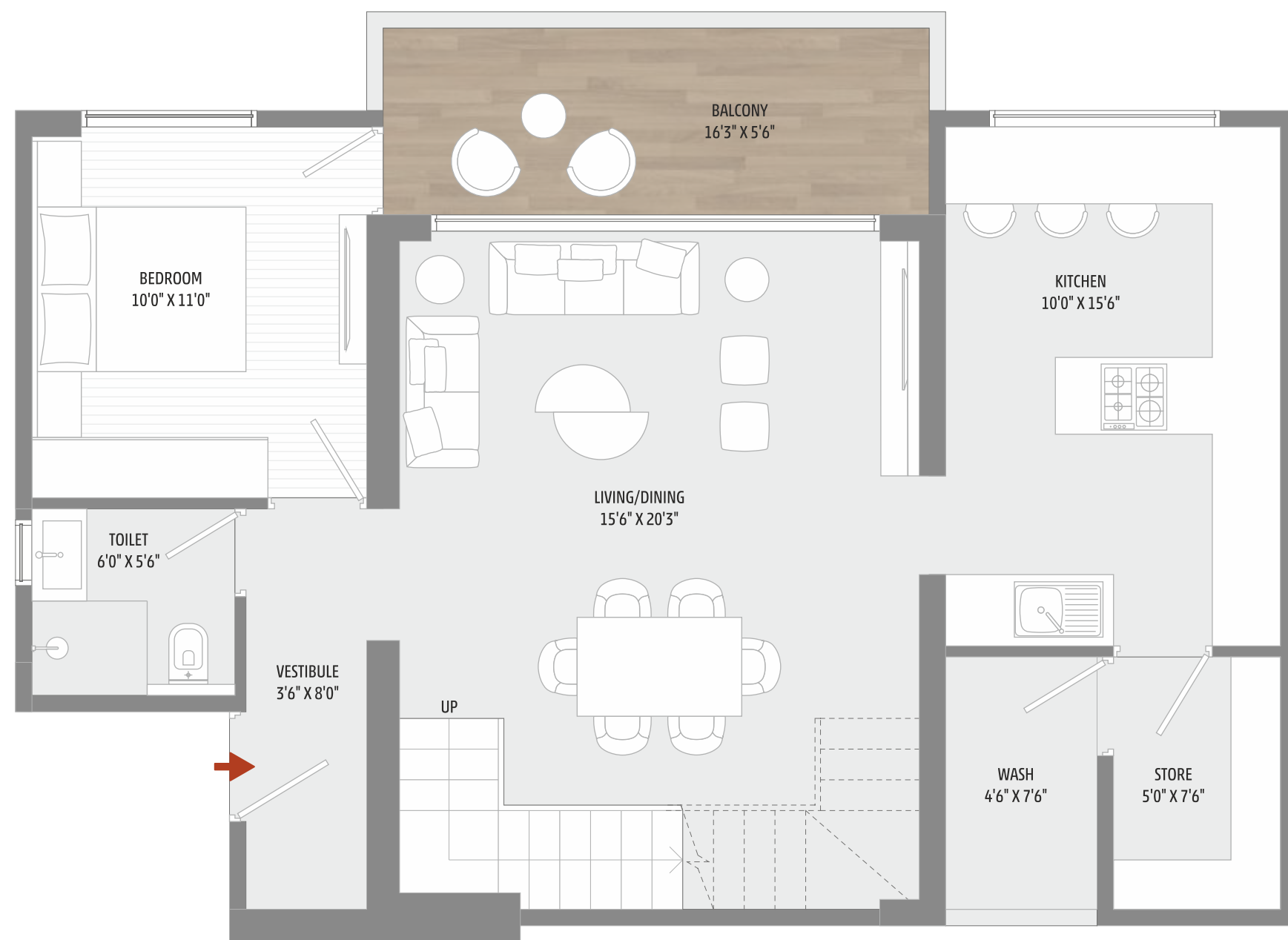


**3 B H K - LOWER PENTHOUSE 33<sup>RD</sup> FLOOR**

INDICATIVE SBA - 2957 SQ.FT.

RERA CARPET + BALCONY + WASH = 1626.29 SQFT

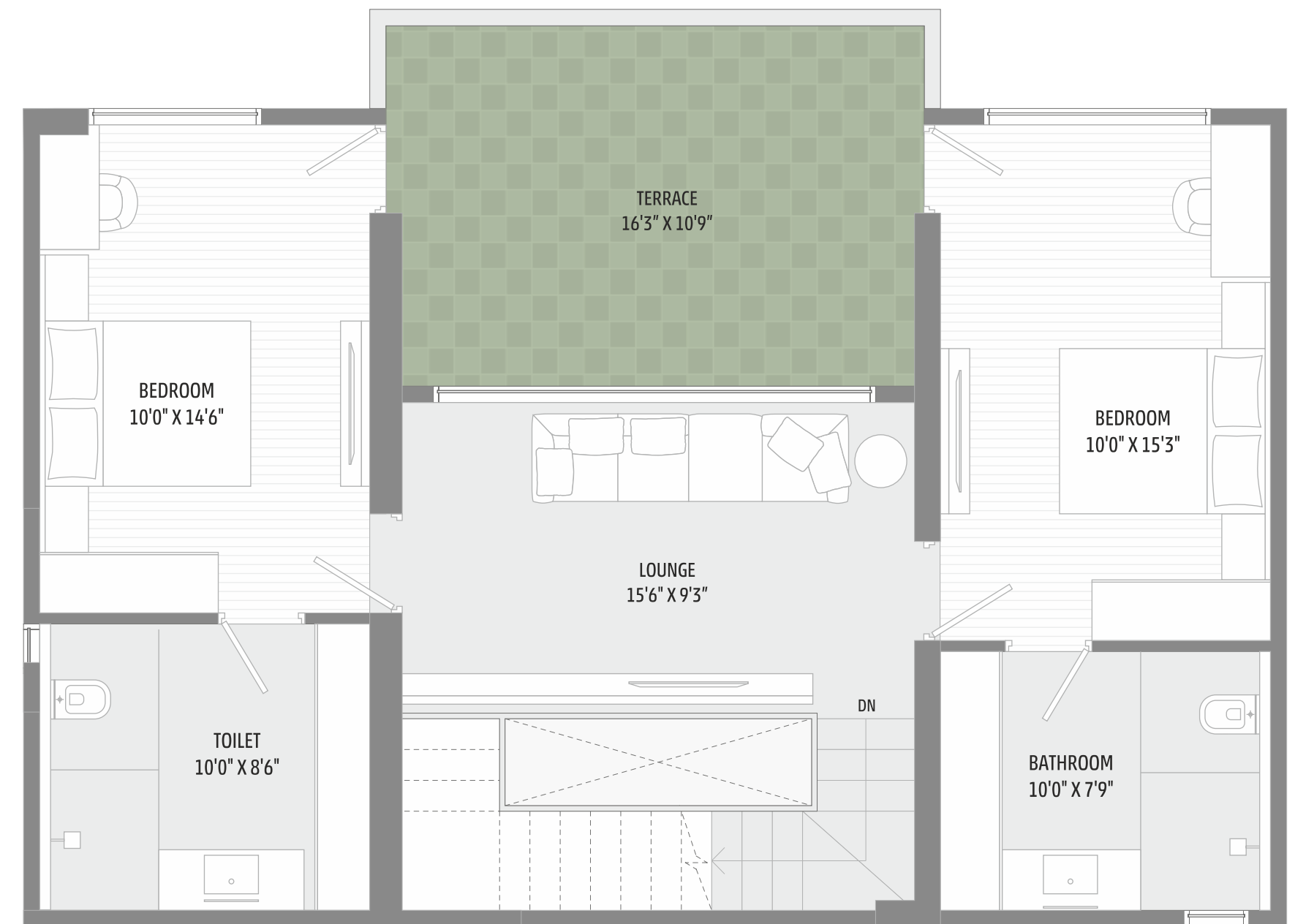
*BALCONY ACCESS  
FROM ALL THE ROOMS.*

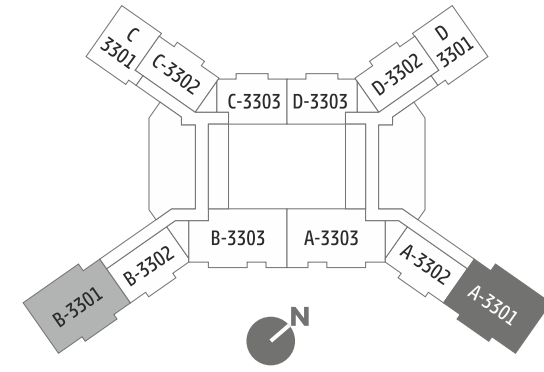


**UPPER PENTHOUSE 34<sup>TH</sup> FLOOR**

TERRACE AREA - 163 SQ.FT.

*BALCONY ACCESS  
FROM ALL THE ROOMS.*



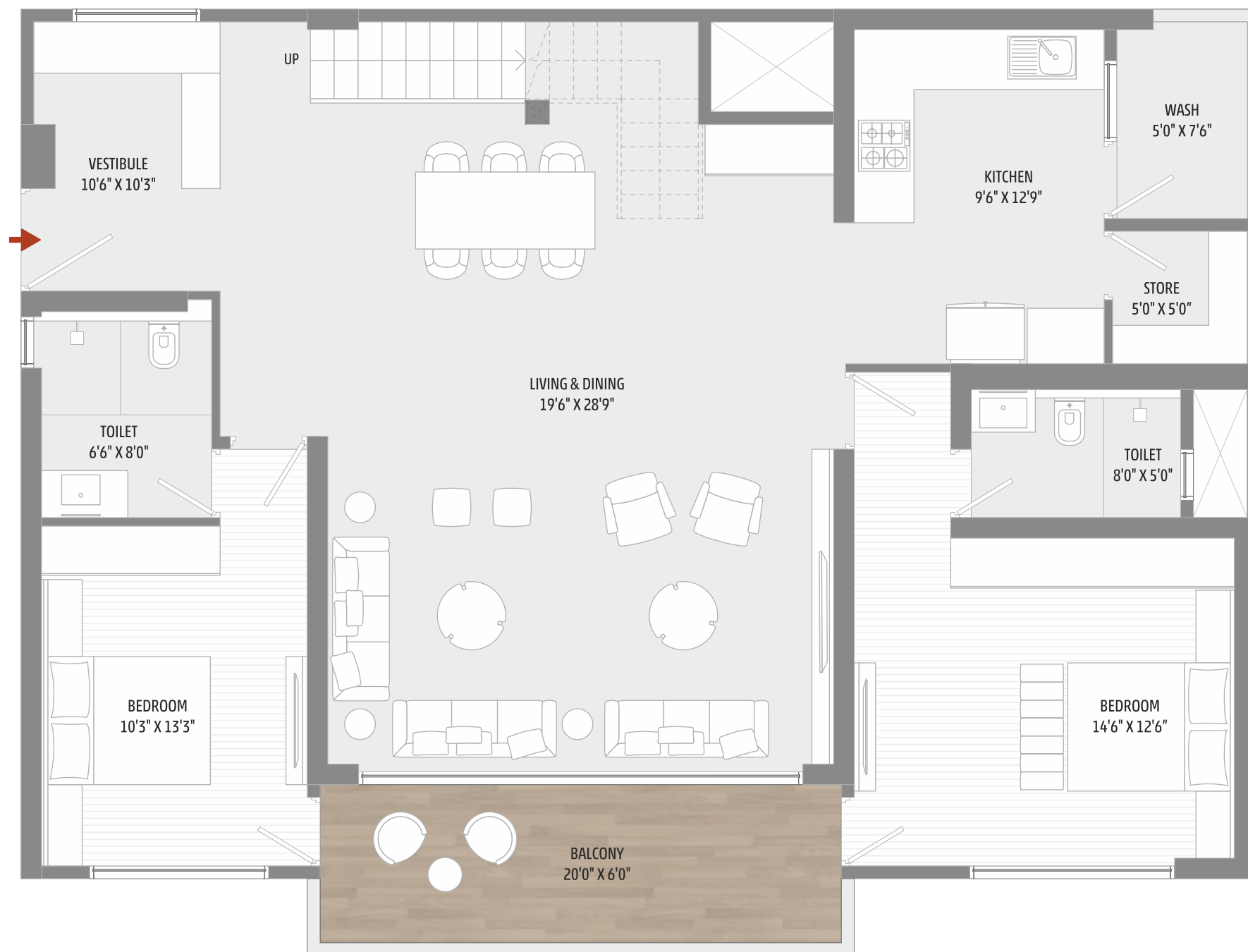


**4 B H K - LOWER PENTHOUSE 33<sup>RD</sup> FLOOR**

INDICATIVE SBA - 4329 SQ.FT.

RERA CARPET + BALCONY + WASH = 2380.80 SQ.FT.

*BALCONY ACCESS  
FROM ALL THE ROOMS.*

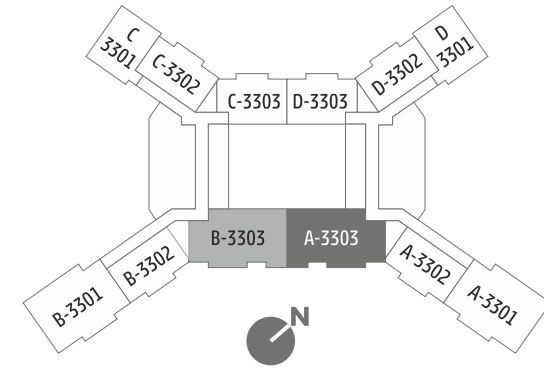


**UPPER PENTHOUSE 34<sup>TH</sup> FLOOR**

TERRACE AREA - 650 SQ.FT.

*BALCONY ACCESS  
FROM ALL THE ROOMS.*





**4 B H K - LOWER PENTHOUSE 33<sup>RD</sup> FLOOR**

INDICATIVE SBA - 4557 SQ.FT.

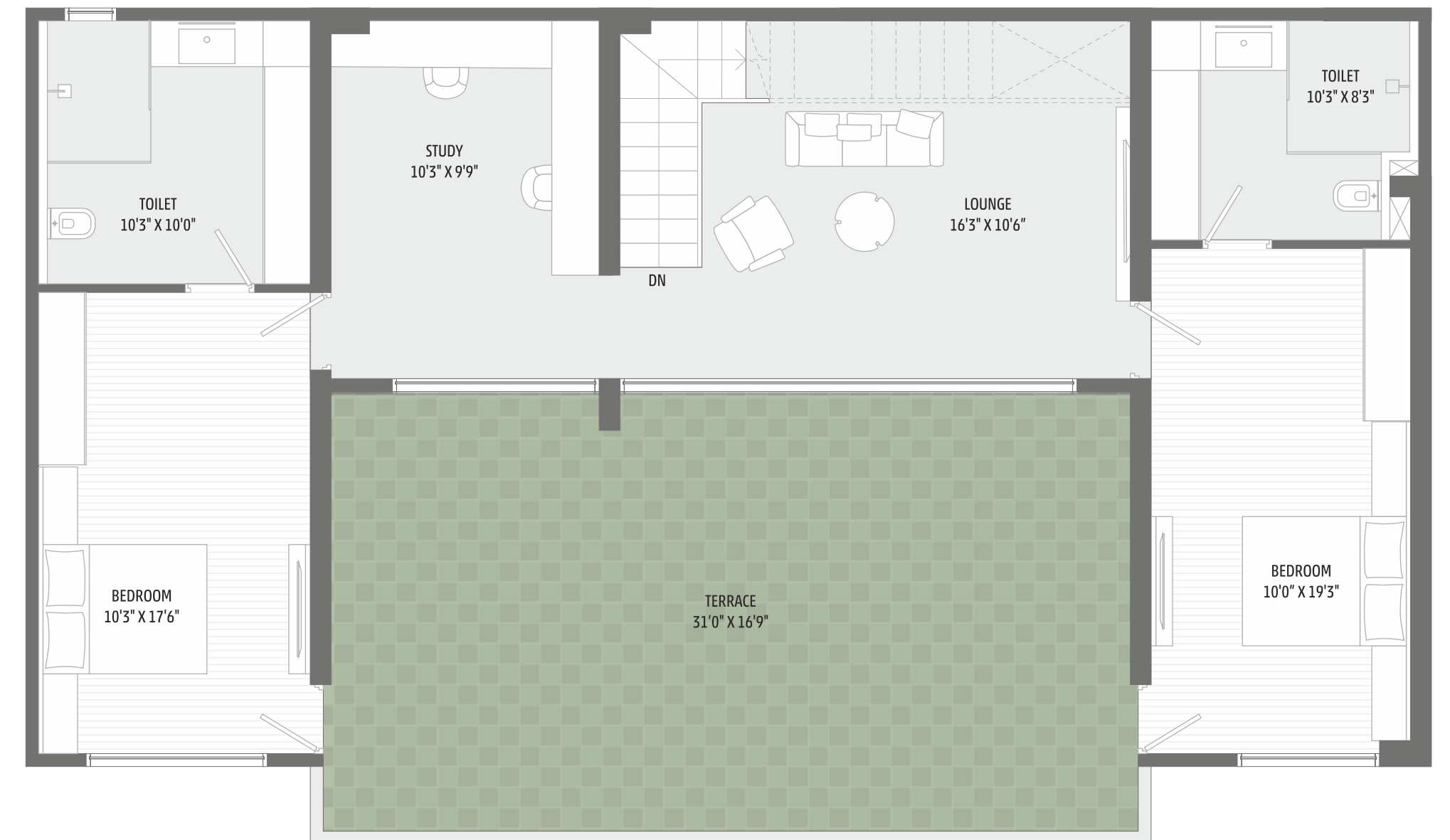
RERA CARPET + BALCONY + WASH = 2506.55 SQ.FT.

*BALCONY ACCESS  
FROM ALL THE ROOMS*

**UPPER PENTHOUSE 34<sup>TH</sup> FLOOR**

TERRACE AREA - 519 SQ.FT.

*BALCONY ACCESS  
FROM ALL THE ROOMS.*





## SPECIFICATION

### FLOORING

- DRAWING / LIVING / DINING
- VITRIFIED TILES

### BED ROOMS

- VITRIFIED TILES

### BALCONY

- NATURAL GRANITE / RUSTIC TILES

### STRUCTURE

- RCC STRUCTURE
- 3 BASEMENT + GROUND + 34 FLOOR

### AIR CONDITIONER

- AC PROVISION IN LIVING ROOM & ALL BEDROOMS

### MAIN DOORS

- DOOR WITH LAMINATED FINISH ON BOTH SIDES
- VIDEO DOOR PHONE

### BEDROOM DOOR/TOILET DOOR

- BOTH SIDE LAMINATED DOOR

### WINDOWS

- ANODISED / ALUMINIUM WINDOWS

### PARKING & LIFTS

- COVERED PARKING
- 8 LIFTS & ADDITIONAL 2 FIRE/SEDRVICE LIFT OF BRANDED MAKE

### ELECTRIFICATION

- 3 PHASE CONCEALED ISI COPPER WIRING WITH MODULAR SWITCHES
- MCB DISTRIBUTION PANEL

### TOILETS

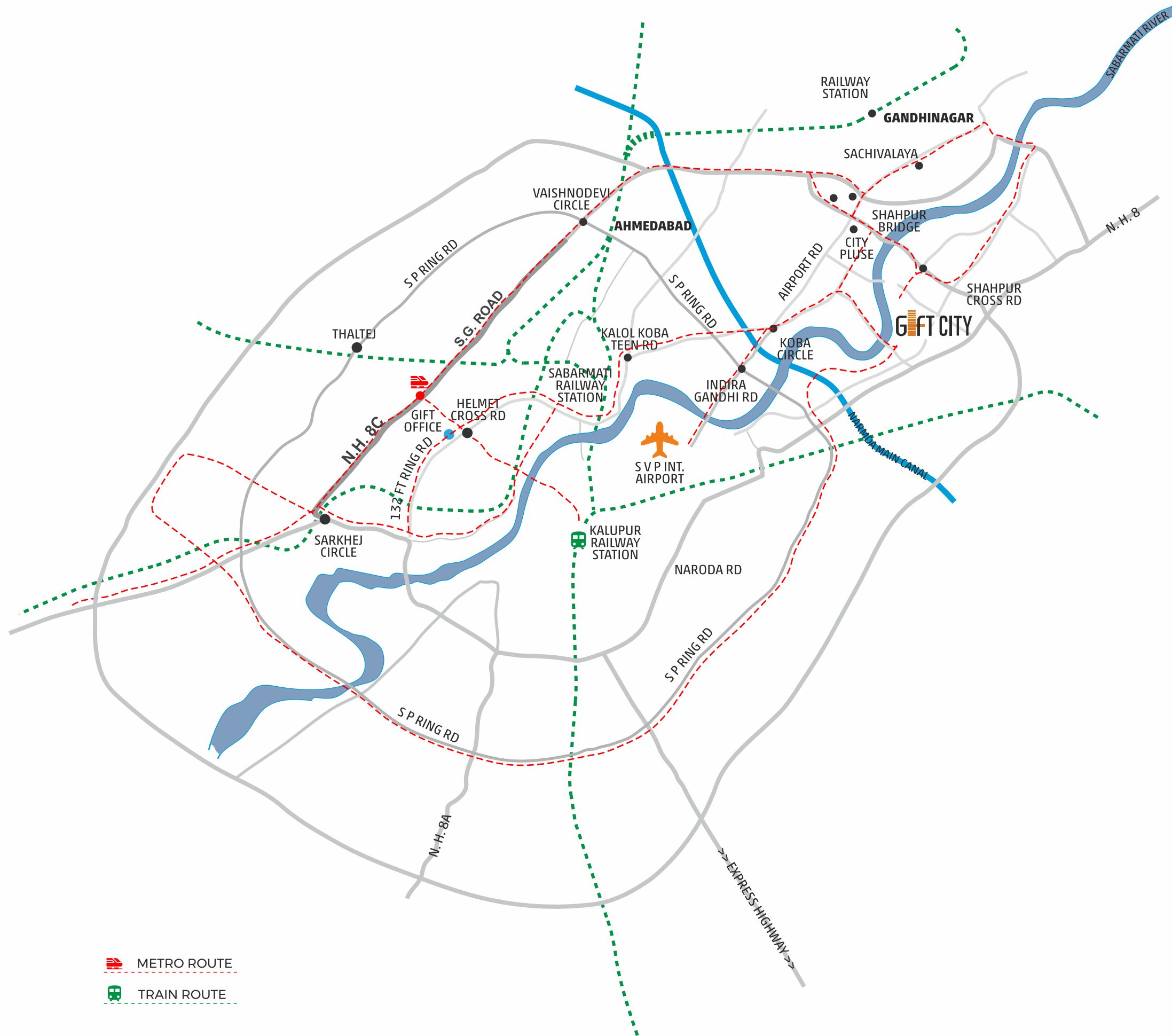
- GLAZED / CERAMIC TILES UPTO LINTEL LEVEL
- COUNTER BASIN / WALL HUNG BASIN
- BRANDED EWCC COUPLE CLOSET



### KITCHEN

- GLAZED / CERAMIC TILES UPTO CEILING LEVEL

### COLOUR

- INTERNAL - PUTTI FINISHED
- EXTERNAL - ACRYLIC ENAMEL FINISH



-  METRO ROUTE
-  TRAIN ROUTE

## A GIFT OF ACCESSIBILITY FROM EVERYWHERE

### DRIVE TIME TO MAIN DESTINATIONS

- LOCATED WITHIN DMIC'S IMPACT AREA (DELHI - MUMBAI INDUSTRIAL PATHWAY)
- LIVE IN CLOSE PROXIMITY TO TOP-TIER SCHOOLS AND UNIVERSITIES
- A HOSPITAL WITH 300 BEDS IS SET TO BE ESTABLISHED IN GIFT CITY
- SP RING ROAD - 10 MINS
- INTERNATIONAL AIRPORT - 15 MINS
- SG HIGHWAY - 10 MINS
- GANDHINAGAR - 18 MINS

### OUTDOOR CONVENIENCE

- MAIN ROADS LINKED BY 4/6 LANE STATE AND NATIONAL HIGHWAYS
- METRO TRANSIT SYSTEM LINKING AHMEDABAD AND GANDHINAGAR

### BULLET TRAIN MUMBAI - GIFT CITY : 3.5 HOURS

- ACCESS THROUGH METRO STOP

### METRO ACCESS IN GIFT CITY

- UDYAN STATION METRO STOP
- VITTH STATION
- EXHIBITION STATION

### NEARBY TO GIFT CITY

- PDDU STATION: 5.8 KM
- CNLU STATION: 6.5 KM



TERMS - All rights are reserved by the developers to make any changes in plan, elevations and other details which will be binding to all the members. - In order to maintain the aesthetics of the apartments at a very high level, installation of AC units will be permitted at the designated spots and nowhere else, changes which effect the elevation & structure system shall not be permitted for all times to come. - Encroachment, in any form, outside the defined units shall not be allowed. - All dimensions shown in the plans are approximate, average unfinished and subject to variations. - Any taxes like GST and Govt. charges extra - All the payments shall be in favor of SHIVALIK JHANVI INFRA SPACE LLP\*  
The above information is indicative of proposed development and is issued in good faith for guidance only and not to be considered as part of any document.



SCAN THIS FOR  
ENQUIRY | LOCATION  
PLANS | WALKTHROUGH  
PHOTOS | BROCHURE

CALL: 7575007330

**SHIVALIK**  
SKYVIEW

SHIVALIKGROUP.COM / SKYVIEW