

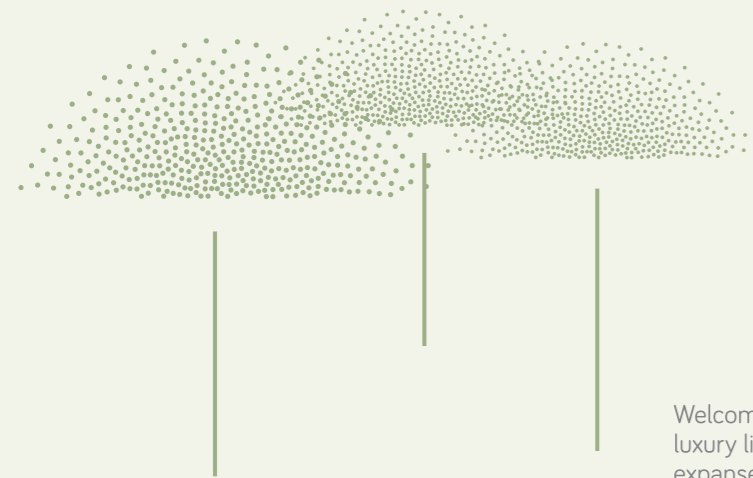
# SKYLINE

4 BHK SKY LIFE

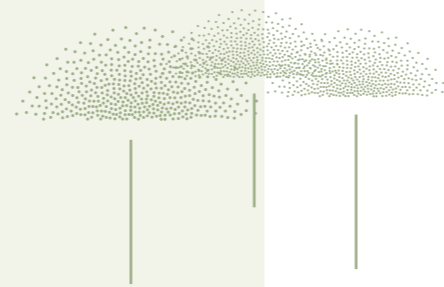


ENDLESS  
SKIES IN  
YOUR ARMS

WELCOME TO YOUR  
PRIVATE HAVEN  
AMIDST THE  
ENDLESS EXPANSE  
OF THE SKY



Welcome to SKYLINE, where the boundaries of luxury living are redefined amidst the endless expanse of the sky and the overlooking greens. Perched at the center of Shantigram, this exclusive high-end residence transcends traditional notions of opulence, offering discerning individuals a sanctuary of unparalleled grandeur and sophistication. With breathtaking views stretching as far as the eye can see, and a host of personalized services designed to elevate every aspect of daily life, SKYLINE epitomizes the pinnacle of sky-high living.



MESMERIZING  
GREENS BENEATH  
YOUR FEET



# SKYLINE

4 BHK SKY LIFE

EXCEPTION ON  
EVERY GLIMPSE

REMARKABLE ON  
EVERY EXPERIENCE

NOT JUST A SPACE..  
A ENTICING ICON  
TO DWELL IN.



FOR THE ONES  
WHO CHOOSE  
BEYOND DESIRES...

# A SKY SANCTUARY LOCATED IN SHANTIGRAM

Adani Shantigram, an unparalleled township nestled in the vibrant city of Ahmedabad. Envisioned as a haven of tranquility amidst the bustling urban landscape, Adani Shantigram beckons residents into a world where modernity harmonizes seamlessly with nature's serenity. Spread across acres of lush greenery and meticulously planned infrastructure, this visionary township embodies the ethos of a holistic living experience. From its meticulously landscaped gardens to its contemporary architectural marvels, every aspect of Adani Shantigram is designed to inspire a sense of peace, comfort, and community. Whether indulging in world-class amenities, strolling along tree-lined boulevards, or immersing oneself in the vibrant cultural scene, residents of Adani Shantigram find themselves embraced by a lifestyle that transcends the ordinary, setting new standards in luxurious living in Ahmedabad.





SKYLINE



ABSOLUTE SOPHISTICATION





TIMELESS  
EXCELLENCE



ENTRY


EXIT

120 FT. WIDE ROAD

GROUND FLOOR PLAN





  
**TYPICAL FLOOR PLAN**  
 2nd to 21st floor

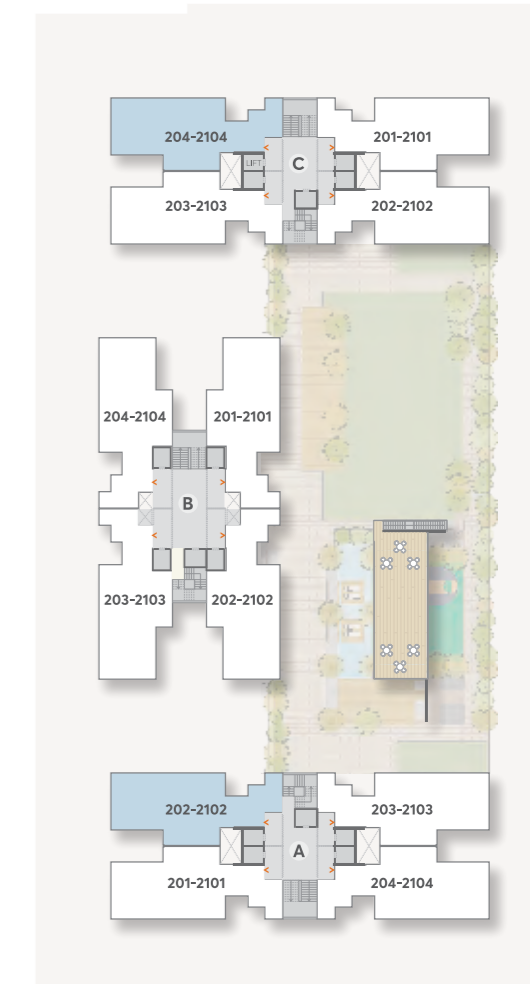
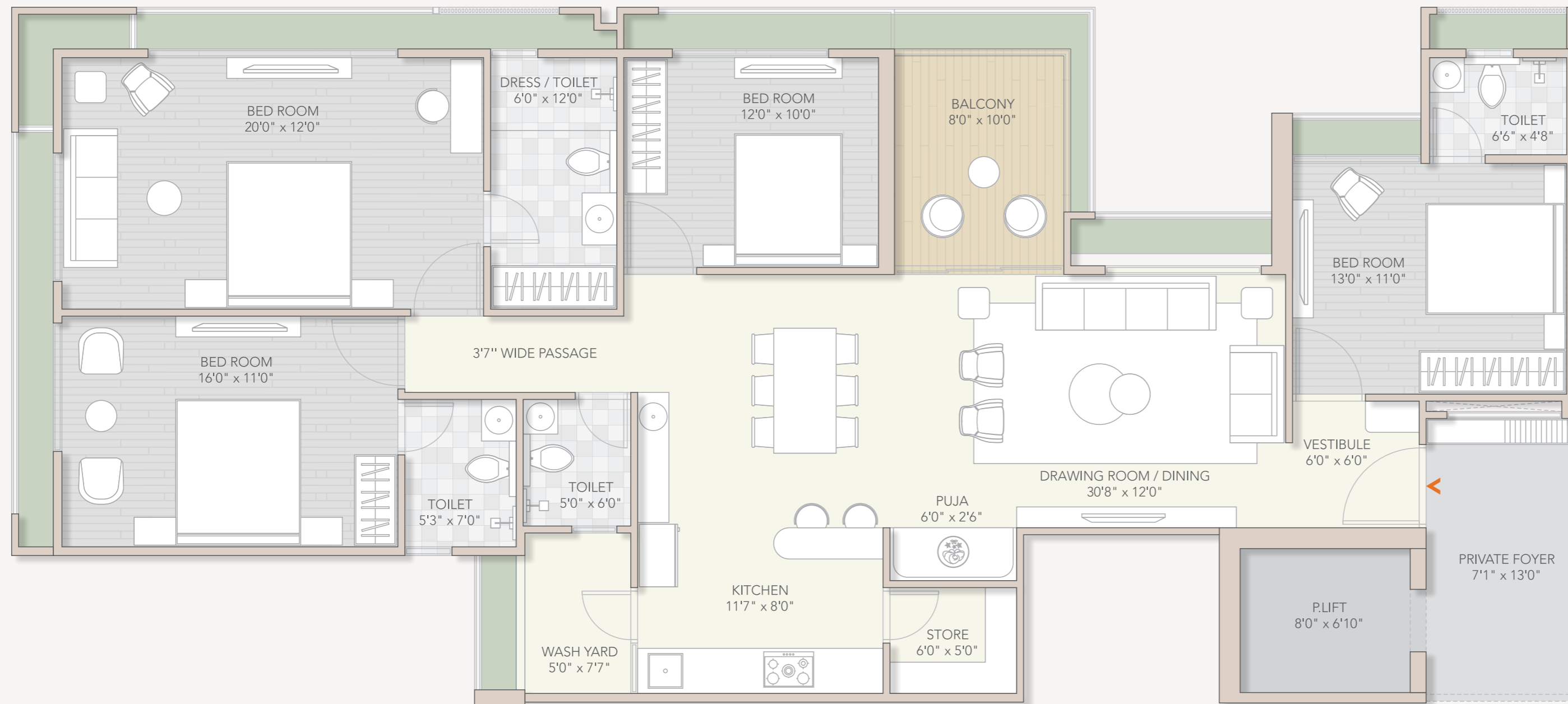


A PRIVATE OASIS  
OF LUXURY









TYPICAL  
UNIT PLAN



## SPECIFICATIONS

### WALL FINISH

- Internal Smooth Finish Plaster With Double Coat Birla Putty.
- Face Plaster Or Texture With Acrylic Paint.

### DOOR

- Main Door - Decorative Main Door With Wooden Frame.

### KITCHEN

- Granite or Vitrified Platform With Stainless Steel Sink Along With Electrical Point For Water Purifier.
- Designer Glaze Tile Dedo Upto Lintel Level.

### ELECTRIFICATION

- ISI Modular Switches.
- ISI Wires.
- Distribution Board With MCB For Safety And Protection.

### DEVELOPERS NOTE

- All rights reserved by the developers for alteration / modification / improvement in specification and changes in dimensions and planning shall be binding to all.
- All architectural and interior views in the brochure are computer graphics simulated interpretation of the actual project.
- The brochure is just for an easy presentation of the project and should not be treated as a legal document.
- Electrical charges, Legal charges, AUDA any other facility charges shall be borne by purchasers.
- Stamp duty, registration fees, all taxes and cess shall be borne by purchasers.
- Payment should be in favour of Shilp Shantigram LLP.
- In the interest of continual developments in the design and quality of construction, the developer reserves all rights to make any changes in the scheme including and not limited to technical specifications, design, planning, layout and all purchasers shall abide by such changes.
- Changes / alterations of any nature including elevation, exterior colour scheme, balcony grill or any other changes affecting the overall design concept and outlook of the scheme are strictly NOT PERMITTED during or after the completion of the scheme.
- Any RCC member (Beam, Column, Slab) must not be damaged during the interior work of purchasers.
- Subject to Ahmedabad Jurisdiction only.

### FLOORING

- Vitrified Tile Flooring In Entire Apartment.

### WINDOWS

- Sliding Aluminium Window Section With Anodized Or Powder Coated.


### TOILET

- Designer Ceramic Or Glaze Tile Upto Lintel Level.
- CP Fittings - Chrome Plated Branded Bathroom Fittings.



**SHILP**  
BUILDING EXCELLENCE

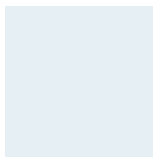
  
**Shantigram**  
THE GOOD LIFE

 **SHILP House**  
Besides Rajpath Club, Rajpath Rangoli Road  
Bodakdev, Ahmedabad - 380054. Gujarat, India.

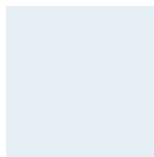
 [www.shilpgroup.com](http://www.shilpgroup.com)

 [sales@shilp.co.in](mailto:sales@shilp.co.in)

 +91 96866 96040



Scan to view  
WALKTHROUGH



Scan to view  
e-BROCHURE

[www.gujrerar1.gujarat.gov.in](http://www.gujrerar1.gujarat.gov.in)

RERA Registration No.: PR/GJ/AHMEDABAD/AHMEDABAD CITY/Ahmedabad Urban Development Authority/RAA14084/020924/300929