



A TRADITION OF SERENITY



WE BELIEVE IN  
REVOLUTIONARY  
TECHNOLOGY,  
DURABLE  
STRUCTURES  
& TIMELY  
DELIVERY.

**MIVAN VERTICAL  
CONSTRUCTION  
( RCC OUTER WALL )**



Our prominence is driven by our consultative approach to the project and our attention to detail in the construction and design stage. We develop a deep understanding of our modern times and build relationships that enable us to create a harmonious environment for our community across the construction firms.



4 & 5 BHK ABODES

# THE EMPIREAN

A TRADITION OF SERENITY

# ERA OF ROYALS

Empirean is more than just a residence, it is a way of life.

Embrace the privilege of living like royalty and surround yourself with the finest luxuries that the Empirean has to offer.

Come and experience the epitome of refined living, where every detail has been crafted to provide you with the best lifestyle fit for all Kings & Queen.

# THE EMPIREAN LIFESTYLE

Soaring high and offering a truly exceptional living experience.

With a limited number of exclusive homes, each residence guarantees a sense of privacy and exclusivity that is second to none.

Only Residential  
Peaceful Surrounding  
Panoramic Sky Views  
Posh Locality

21 FLOORS OF  
LIVING

30+ PREMIUM  
AMENITIES

160 EXCLUSIVE  
UNITS

50,000+ SQ. FT.  
SPACE FOR RECREATION

3 LEVEL OF  
PARKING



# AN EXQUISITE RARE COLLECTION



A TRADITION  
OF SERENITY

## **MIVAN VERTICAL CONSTRUCTION ( RCC OUTER WALL )**

This innovative approach offers enhanced protection against common issues such as cracks, seepage, and uneven surfaces. By incorporating this technique, the structure gains added durability, ensuring longevity and resilience.

# THE ULTIMATE ADDRESS

## GETTING AROUND

**7 min** S.P. Ring Road

**20 min** Airport

**2 min** Vaishnodevi Circle

**2 min** Gota Circle

**10 min** Bodakdev

**16 min** Sarkhej

**20 min** Gandhinagar

## LIVING AROUND

**30+** Café & Restaurants

**15+** Luxury Hotels

**10+** Hospitals

**12+** Sports & Gaming Hub

**10+** Educational Institute

**7+** Malls & multi plex

Being on the main road ensures seamless connectivity to the city's major attractions, business districts, and transportation hubs, allowing effortless commuting and quick access to the city.

However, the slight distance from the highway offers a peaceful and tranquil environment, shielding our residents from the noise and chaos associated with heavy traffic.

Life becomes a breeze as you enjoy the convenience of nearby shopping centers, restaurants, and entertainment options, while also relishing in the tranquillity and privacy that our location affords.

Discover the perfect balance between connectivity and serenity at Empiirean.

# AN ARCHITECTURAL SPLENDOR

A TRADITION  
OF SERENITY





A woman in a white, long-sleeved, flowing dress is seen from behind, holding a wide-brimmed straw hat. She is standing in a garden with lush green foliage. The scene is bathed in soft, warm light, suggesting a sunny day. The overall mood is serene and elegant.

# HEAVENLY EMPIRE

Heavenly empire awaits to embrace everyone seeking the pinnacle of luxury and refinement.

With an exquisite blend of grandeur and comfort, Empiirean offers the best of everything, catering to the diverse desires and aspirations of all who enter.

Step into a world where dreams become reality, where impeccable craftsmanship and attention to detail create a haven of unparalleled beauty. Every aspect of this extraordinary home is meticulously designed to provide an unrivalled living experience, where opulence and serenity coexist harmoniously.



WELCOME

Experience a seamless blend of aesthetics and privacy as you pass through our secure and stylish entry gate.



A TRADITION  
OF SERENITY

# ENTRANCE FOYER

Indulge in the opulence of our luxurious welcoming entrance foyer, where sophistication and comfort harmoniously converge.



A TRADITION  
OF SERENITY

## ENTRANCE LOUNGE AREA

Immerse yourself in the epitome of luxury and comfort in our classy and comfy waiting area, designed to provide an exquisite experience for our esteemed guests.



A TRADITION  
OF SERENITY

## ENTRANCE LIFT LOBBY

Experience a seamless transition from arrival to departure as our grand and bright foyers lead you effortlessly to the private lifts, ensuring a seamless and elevated journey throughout your visit.

# GEM OF LUXURIES

A soft-focus photograph of a field of daisies. The scene is bathed in a warm, golden light, likely from a low sun, creating a bokeh effect with bright, out-of-focus circles of light in the background. Several butterflies with orange and blue wings are scattered throughout the field, some perched on the flower heads and others in flight. The overall mood is serene and elegant.

An extraordinary residential enclave that surpasses all expectations with its unmatched collection of over 20+ life-enhancing amenities. Indulge in a world of opulence and refinement, where every detail has been meticulously crafted to cater to your desires and elevate your living experience.

Central Landscape Garden



Wooden Deck With Swings



Toddler Room



Work from Home Area



Meeting Room



Covered Swimming Pool



Life Size Games



Grand Entrance Foyer



Lavish Waiting Lounge



Dedicated Reception Area



Multi Purpose Court



Banquet Hall



Male & Female Steam Room



Library



# LEISURE HAVEN

# 50,000 + SQ.FT.



Bench Along The Planters



Box Cricket



Multimedia Room



Modern Gymnasium



Indoor Game Room



Refreshment Area



Play Station



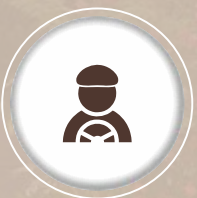
Separate Entry For House Help



High Speed Private Elevators



Personal Entry Foyer



Driver's Rest Room



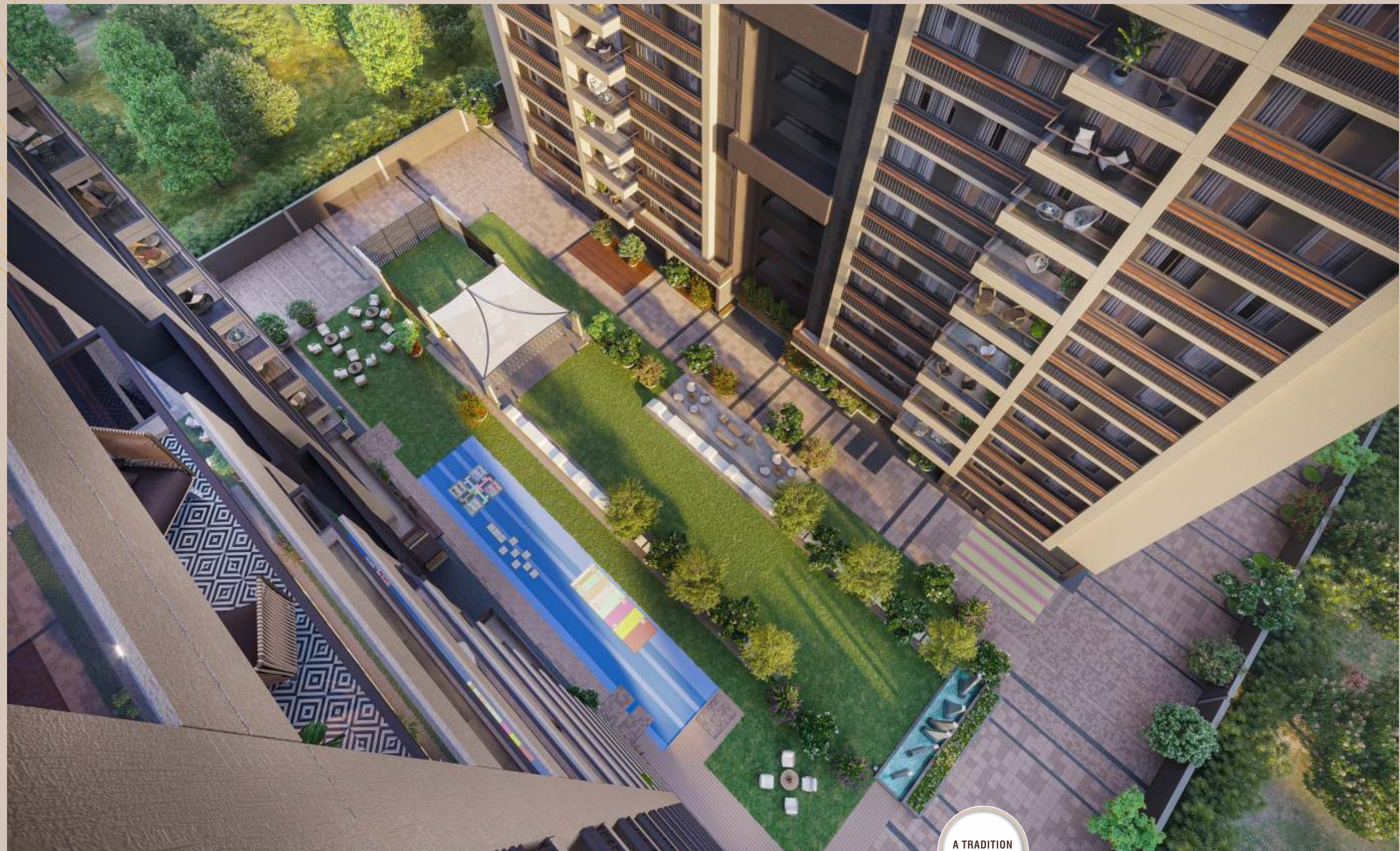
Pick Up/ Drop Off Zone



Gazebo Seating



3 Level Basement

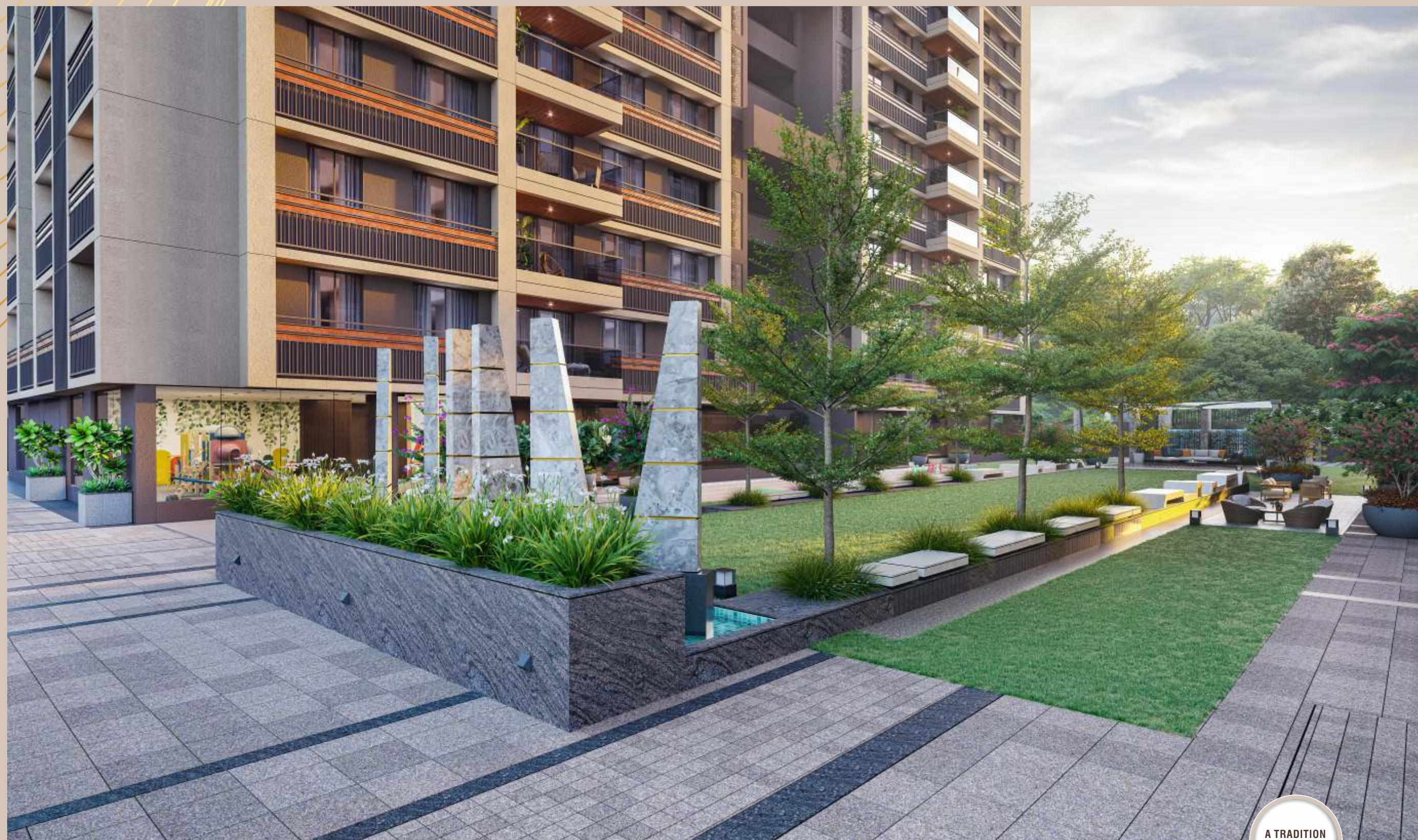


A TRADITION  
OF SERENITY

EXCEPTIONAL COMMON SPACE

80 FT. SPACE BETWEEN BLOCKS  
our incredible common space, where lush greenery and captivating elements  
come together to create a truly enchanting environment.





A TRADITION  
OF SERENITY

## MEDITATIVE LANDSCAPES

The synergy of a central landscape garden adorned with a magnificent sculpture & water-body that creates an enchanting beauty.



A TRADITION  
OF SERENITY

# SERENE SURROUNDINGS

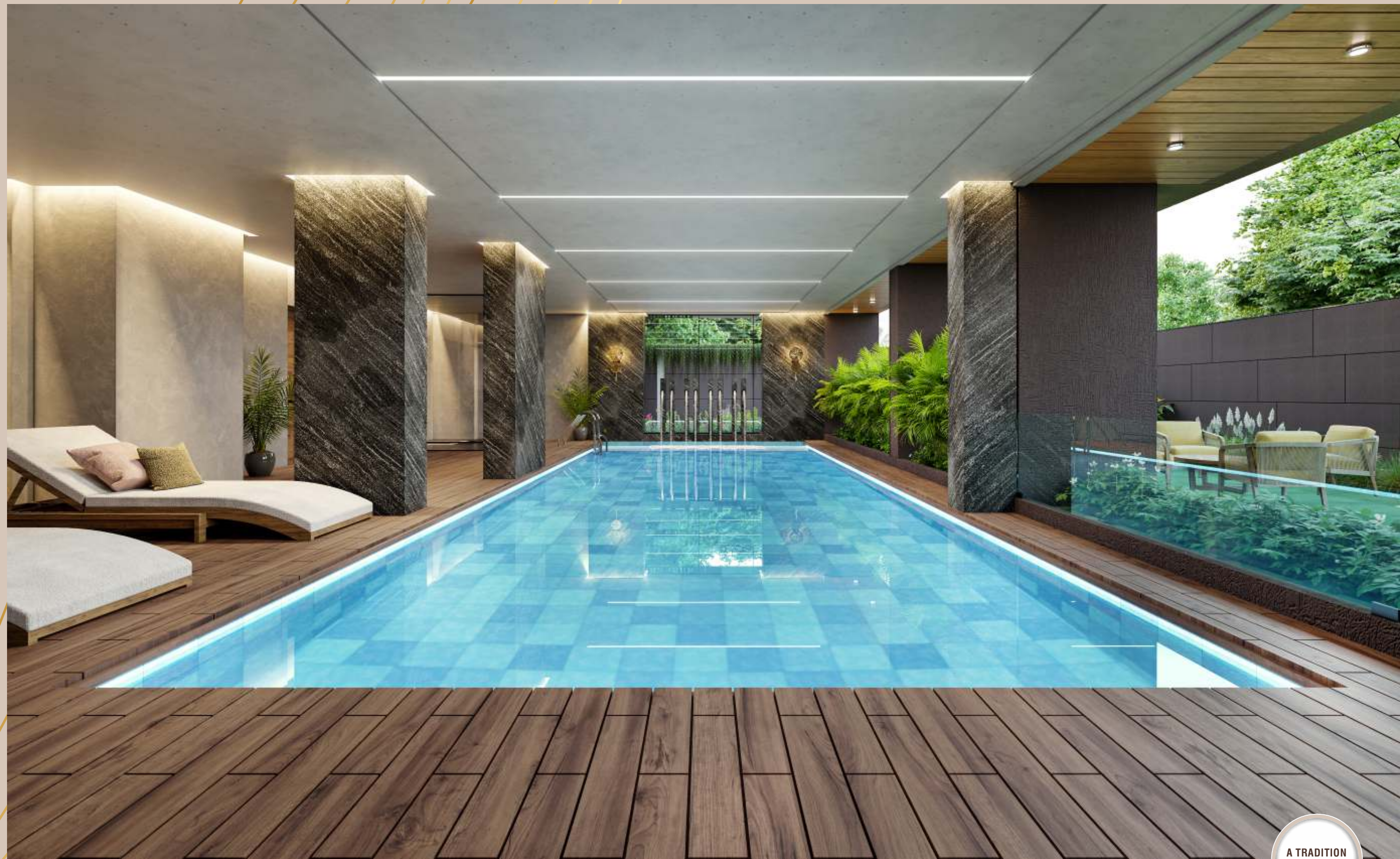
A haven for laughter and connection, where fun evenings perpetuate,  
Amidst nature's embrace, joyful moments find their perfect state.



A TRADITION  
OF SERENITY

# PEACEFUL SIT-OUT

A tranquil sit-out nestled amidst the serene surroundings,  
A sanctuary of peace, where one finds solace and profound grounding.



A TRADITION  
OF SERENITY

# REFRESHING BLUES

An indoor swimming pool, an oasis of aquatic delight,  
Where laughter and splashes create memories shining bright,  
With a blend of fun, peace, and privacy.

POOL  
SIDE  
BLISS



The Tranquil Blend of Poolside and Landscape Seating

A TRADITION  
OF SERENITY



# BLUES & GREENS

A TRADITION  
OF SERENITY

Immerse yourself in a serene oasis where blue meets green, Indulge in refreshing dips, surrounded by landscape garden, Discover tranquillity and beauty within this picturesque scene.



A TRADITION  
OF SERENITY

# MODERN GYMNASIUM

a sanctuary of strength and vitality,  
Where fitness enthusiasts thrive, embracing a healthy reality,  
A catalyst for a vibrant life, where wellness and vigor find totality.

# MULTI-GAME COURT & BOX CRICKET



Spacious multi-game court,  
it's always a lively sport,  
Box cricket, a popular game enjoyed by all,  
Bringing people together,  
creating memories that won't fall.







A TRADITION  
OF SERENITY

A haven of indoor fun,  
Chess battles, Foosball frenzy,  
Carrom rounds to be won,  
Laughter fills the air,  
As friendships are forged and  
memories spun.

# INDOOR GAME ROOM





# PLAY, LEARN & GROW

A TRADITION  
OF SERENITY

Where little ones find delight and innocence in every trace,  
Life becomes easy and joyous, as their laughter fills the space.

PRIVATE  
THEATRE  
RETREAT



The ultimate cinematic experience,  
where privacy meets silver screen delight.





A TRADITION  
OF SERENITY

# GRAND EVENTS GALORE

Step into the realm of luxury within our multipurpose hall,  
A space designed to cater to your every event and call,  
Indulge in opulence and grandeur, where celebrations stand tall.

MAKES  
YOUR  
MEMORY



A TRADITION  
OF SERENITY

Embrace the flexibility and enchantment of this versatile space,  
where your vision comes to life, and celebrations flourish.



A TRADITION  
OF SERENITY

Escape the distractions of home and embrace a professional atmosphere, Where productivity thrives and success unfolds.

# INSPIRING WORKSPACE WITHIN REACH





# CRAFTED FOR ULTIMATE COMFORT

Step into a realm of unparalleled luxury and sophistication with our meticulously designed spaces, where every detail has been thoughtfully curated to provide a truly heavenly lifestyle. From the moment you enter, you will be captivated by the grandeur and opulence that exude from every corner.

Indulge your senses in the exquisitely adorned interiors, where the finest materials, intricate craftsmanship, and tasteful embellishments create an ambience of regal elegance.

Embrace a life of unparalleled comfort and splendor in our heavenly spaces, where every moment is filled with a sense of refinement and indulgence. This is the lifestyle you deserve, where royal comforts are not just a dream but a reality.



A TRADITION  
OF SERENITY

### GRANDIOSE BALCONY

# TAILOR<sup>ED</sup> TRANQUILITY

Discover a peaceful and cozy corner to escape the world,  
as you immerse yourself in the soothing embrace of  
lush greenery and a captivating views.





# IMPRESSIVE FROM THE FIRST GLANCE

The grandeur of the design captivates with its  
impeccable attention to detail and  
exquisite craftsmanship.

A TRADITION  
OF SERENITY





A TRADITION  
OF SERENITY

10'6" FLOOR HEIGHT

# PREMIUM LIVING SPACES

Experience the epitome of luxury and refinement in our spacious living and dining spaces. Bathed in natural light, these grand areas exude a sense of opulence and tranquility.



A TRADITION  
OF SERENITY

# MODERN & MINIMAL KITCHEN SPACE

LARGEST IN SEGMENT "L" SHAPED KITCHEN  
WITH VENTILATED WINDOW.

Culinary haven that seamlessly blends functionality with aesthetics,  
offering a space that inspires creativity and effortless meal preparation.



# AMBIENCE OF PEACE

2 EQUAL SIZE MASTER BEDROOMS  
WITH WALK-IN WARDROBE.

Retreat to your personal haven of indulgence in these opulent bedrooms, complete with spacious walk-in closets and lavishly appointed baths, where comfort and style intertwine.

A TRADITION  
OF SERENITY



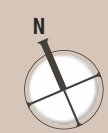
# TRUE TOP OF THE LUXURY LIVING, PENTHOUSE

A TRADITION  
OF SERENITY

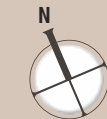
Towering ceilings and expansive windows bathe the room in natural light, creating an ambiance of grandeur and airiness. Experience a heightened sense of freedom and sophistication as you bask in the open expanse, where every detail is curated to perfection.



**GROUND FLOOR PLAN**



**1ST TO 19TH FLOOR PLAN**  
(TERRACE ONLY AT 1ST FLOOR)





**TYPICAL  
FLOOR PLAN**





**TYPICAL UNIT PLAN**








**PENT HOUSE LOWER LEVEL  
UNIT PLAN**



**PENT HOUSE UPPER LEVEL  
UNIT PLAN**

# SPECIFICATION

<b>FLOORING</b>		Vitrified tiles in all rooms and master bedroom.
<b>KITCHEN</b>		Granite platform with SS sink, designed glazed tiles up to lintel level.
<b>WALLS</b>		Internal - smooth finish mala plaster with wall putty. External - walls finished with 100% acrylic paint.
<b>WATER SUPPLY</b>		Continuous water supply, common bore well and pressure pump distribution system.
<b>TERRACE</b>		Open terrace to be treated with suitable waterproofing and finished with china mosaic flooring for heat reflection.
<b>TOILETS</b>		Elegantly designed toilet with vitrified tiles up to lintel level Counter Basin / Wall Hung Basin EWC with Concealed Flushed Tank CP Brass Fittings & Sanitary ware: High Quality
<b>PLUMBING</b>		Concealed plumbing with center point high standard pipe fitting.
<b>DOORS</b>		All doors laminated doors.
<b>ELECTRIFICATION</b>		Single phase concealed copper flexible wiring with modular switched & accessories. MCB distribution panel. AC point and TV point in all bedrooms.
<b>WINDOWS</b>		Fully glazed aluminum section windows.



**pravish** **AADHYA**

**THE EMPIREAN**

Developed by:  
**ASCENT SKY INFRACON LLP**

OPP. SPINNY, S.G. HIGHWAY.

RERA NO.: PR/GJ/AHMEDABAD/AHMEDABAD CITY/AUDA/RAA11812/220523 [www.gujrera.gujarat.gov.in](http://www.gujrera.gujarat.gov.in)

+91 7434 99 66 33 [theempierean.com](http://theempierean.com) [info@pravish.com](mailto:info@pravish.com) [/pravish\\_group](https://www.instagram.com/pravish_group)

<b>ARCHITECT :</b>	<b>CONSTRUCTION BY :</b>	<b>STRUCT. CONS. :</b>	<b>LANDSCAPE CONS. :</b>	<b>MEP CONS. :</b>
				

**Disclaimer** ● Right Reserved by the developers to make any changes in plan, elevations and other details which will be binding to all the members. ● In order to maintain the aesthetics of the building at a very high level, installation of AC units will be permitted at the designated spots and nowhere else, changes which affect the elevation and structure system shall not be permitted for all time to come. ● Encroachment. in any form, outside the defined units shall not be allowed. ● Merchandise, articles, etc. cannot be stored / kept in common areas as defined by the project managers. ● Only internal changes shall be made with prior permission and shall be charged extra in advance. ● All dimensions shown in the plans are approximate, average, unfinished and subject to variations ● G.S.T. & any other taxes will be extra. - Changes in services of individual units will not be permissible.

**Note** : Brochure isn't a legal document. By referring this brochure, no claim or objection can be raised by a customer. The photographs and artist impression are for reference only.

